



Elevate Students

2021 ANNUAL REPORT

Elevate Students

2021 Annual Report

Introducing the Student Advisory Council	2
Opening Letter from President & CEO and Board Chair	3
Launching Elevate	4
Impact	
Measuring Success in 2021	7
Our Top 5 Lessons	10
Who We Serve	13
Partnerships	
Growing Partnerships in 2021	14
Magic in Michigan City	16
Credentialed Schools	18
School and District Partners	21
People	
Educator Awards	27
Supporters	28
Board of Directors and Research Advisors	33
Financials	34

In 2021, EL Education launched our national Student Advisory Council. This annual report is dedicated to our students and their impact on our work. Throughout this report are reflections from some of our Student Advisors, sharing their achievements and inspiration points from the past year.

Dear Friends of EL Education,

My name is Hannah Smith, and I am a first year student at Clemson University and a proud 2021 graduate of River Bluff High School, an EL Education Credentialed School in Lexington, South Carolina. I have the honor of introducing EL Education's 2021 Annual Report, Elevate Students, on behalf of the EL Education Student Advisory Council.

My love for EL Education was kickstarted in my junior year of high school when I served as a Student Ambassador for the 2019 National Conference in Atlanta. That conference inspired me to pursue a dual degree in secondary education and English, with hopes of becoming an attorney and generating policies to improve our public education system. At River Bluff, I learned that character is a defining concept. I learned that living with an ethical mindset and sticking to your core beliefs is the best way to contribute to the world.

I decided to pursue the EL Education Student Advisory Council to continue growing in my character and appreciation for learning. Launched in 2021, the Student Advisory Council has connected a group of 12 students, ranging in grade level, geography, socioeconomic status, and experience. We meet monthly and help plan signature EL Education events, like Better World Day and the National Conference (side note: I can't wait to see everyone in Chicago in December 2022!), and we contribute to curriculum development. **You will hear from us throughout this report.** Being a part of the Student Advisory Council means that I can continue to work with both teachers and students to elevate the importance of students' voices, which is one of my greatest passions. The Council fosters an environment to grow my passion for educational equality while also challenging me on past beliefs.

In discussing it with other members, it is clear that 2021 was a year of challenges, yet all of our schools continued to persevere. Our teachers adapted and continued to support students' growth and learning. Our school systems were

more flexible than ever, and we learned that education can happen anywhere despite the isolation. Schools still managed to connect students and staff, and continued to support them as best as possible, especially by fostering personal relationships.

Looking ahead, I am hopeful that our education system will inspire students to become contributing citizens, and that socioeconomic status will no longer be a limitation, but a contribution to educational environments. Our classrooms are made stronger with diverse perspectives and socioeconomic backgrounds, and I believe that students and teachers can learn from authentic conversations rooted in personal backgrounds. Forming genuine relationships with students is the gateway to honest conversations. This is the work of the EL Education Student Advisory Council. We are our teachers' biggest cheerleaders, and we hope that our work to communicate and elevate our experiences will lead to greater support for all students.

I cannot wait to see what this year holds and am confident that EL Education will be a large part of my personal and academic growth.

Yours in Crew,



Hannah Smith

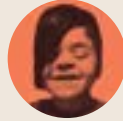
Clemson University Honors College,
Class of 2025
2021 Graduate of River Bluff High School
in Lexington, South Carolina

Student Advisory Council



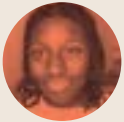
Marissa Barnwell

8th Grade Student, Meadow Glen Middle School
Lexington, SC



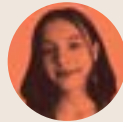
Jasper Cox

7th Grade Student, The Springfield Renaissance School
Springfield, MA



Chelsea Dargba

8th Grade Student, Two Rivers Public Charter School
Washington, DC



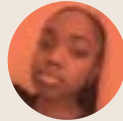
Amelie Ghirardo

12th Grade Student, Metropolitan Expeditionary Learning
School (MELS), Queens, NY



Moses Jackson

7th Grade Student, Capital City Public Charter School
Washington, DC



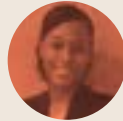
Stephanie Kacou

Alumni, Metropolitan Expeditionary Learning School
(MELS), Queens, NY



Lauren Loy

12th Grade Student, Big Pine High School
Big Pine, CA



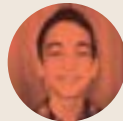
Jordyn Miller

12th Grade Student, Brooklyn Collaborative Studies
Brooklyn, NY



Kayla Mitchell

11th Grade Student, Harborside Academy
Kenosha, WI



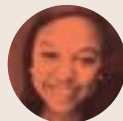
Dylan Paris

8th Grade Student, Brooklyn Collaborative Studies
Brooklyn, NY



Hannah Smith

Alumni, River Bluff High School
Lexington, SC



Sydney Smith

11th Grade Student, River Bluff High School
Lexington, SC

Opening Letter

from Scott Hartl, President & CEO and Bruce Rich, Board Chair

Dear Friends,

Elevate students. It is more than the title of this EL Education 2021 Annual Report. It has been the heart of EL Education's work for thirty years. In 2021, EL Education proudly launched a national Student Advisory Council, made up of EL Education students and graduates from communities across the country. As Student Advisor and current college student Hannah Smith writes in her opening letter, the voices of these remarkable young people and their reflections on a challenging year are featured throughout this report.

It is EL Education's mission to ensure these young people—all young people—experience an exceptional education that prepares them to lead lives of opportunity and contribution.

We are proud that EL Education is bringing this effective educational approach to public schools at scale. In 2021, a year of historic disruptions, EL Education directly served more than 400,000 students and 27,000 teachers in 1,000 schools across 32 states, and reached an estimated one million students through innovative educational resources, including an acclaimed core academic curriculum. EL Education also launched important new partnerships with school systems in Boston, New York City, and Charleston, while deepening support for urban and rural, charter and district public schools that are reimagining education.

We know that EL Education has a unique and vital role to play in the national movement for excellence and equity in K-12 education, which is why we adopted a new and ambitious strategic plan to make our model and resources accessible to underserved communities at scale. This past year, EL Education received an extraordinary outpouring of philanthropic investment for this work, and we are deeply grateful and motivated by this support.

Thank you for being a part of our vibrant and growing community. Together, we will ensure that our public education system remains a powerful force for opportunity in our country.



Scott Hartl
President & CEO



R. Bruce Rich
Board Chair

Launching



EL Education embarked in 2021 on ELEVATE: our strategic plan to develop and scale our model so that it's accessible to every public school in America. Elevate is focused on advancing equity in K-12 education.

1

A Better America

*"I think everyone understands that there's a big divide in America," says **RON BERGER**, **EL Education's Senior Advisor for Teaching and Learning**. "What we don't often discuss is our shared belief in the untapped potential of students to make a difference, and how powerful it would be for our national success and economy if we could ignite that potential and cultivate entrepreneurship, craftsmanship, character, and citizenship in our youth."*

That's why preparing students to contribute to a better world is at the center of everything

EL Education does. Our model cultivates the inner conviction, academic rigor, and expressive creativity that are the wellspring of our country's exceptional entrepreneurial spirit. And that spirit thrives best when every American can partake in it. Our work is ultimately about social change.

2

Educating The Whole Child

We know that what we do works. And we know why: our model attends to the needs of the whole child. Whole-child learning, which includes social-emotional learning, is a path toward Character, one of our central dimensions of student achievement. The goal of our work is for children to take responsibility for their own learning, build confidence and agency, and treat others with respect and compassion. That's what makes them great students.

And we can measure the results by **EL Education's** two other dimensions of achievement: Mastery of Knowledge and Skills, and High-Quality Student Work. Along with Character, these dimensions are interdependent and they carry equally powerful weight. The whole-child approach to learning doesn't trade academic integrity for social and emotional development. They're inseparable and mutually reinforcing elements.

3

Now More Than Ever

The effects of the pandemic on public education exposed deep, urgent, societal inequities. American school systems struggled to serve children from non-privileged backgrounds, and we saw how deep the divide really is. Closing the gap is critical.

When we talk about educational equity at **EL Education**, we mean two kinds:

EQUITY OF OPPORTUNITY a stronger educational experience for more students in more places;

EQUITY OF OUTCOME no single element of a child's identity (including race, ethnicity, and economic background) should ever predict or determine their educational outcome.

The pandemic gave us a window to build new solutions that drive both of these equities for all students, regardless of where they come from or what they look like.

4

Our Solutions

We're already on our way there. When we partnered with Detroit Public Schools Community District, students' test scores outpaced the state of Michigan. In Tennessee, our students' scores were the top in the state. Alabama's best selling educational resource book is one we created. Elevate takes everything we've been doing and making since our founding 30 years ago, and perfects, casts, and scales our model.

Elevate consists of three foundational pillars:

- **SYSTEMS CHANGE** establishes new learning partnerships with a cohort of school districts and charter networks around the nation. These partnerships will teach us the best way to measure what's really meaningful to us—the effects of the educational environment on student outcomes—and generate proof points for how our model increases equity in schools.
- **REACH** will double our market share by building new distribution channels and investing in new product development to scale our curriculum nationally.
- **RESEARCH** expands our learning capacity by doubling our Credentialed Schools, allowing us to anchor the development of our educational materials in the study of our highest-performing schools.

In order to build these pillars and the structure they support, we've launched a fundraising campaign to secure \$50 million in philanthropic support by 2025. Elevate seeds our country's future through the growth of EL Education's work—the growth of our students.



MARISSA BARNWELL

Grade: 8

School: Meadow Glen Middle School / Lexington, SC

EL Education Credentialed School and home of the 2016 South Carolina State Middle School Principal of the Year

Last year, school was all virtual,

so it wasn't the standard year. My English teacher kept telling us how strong we were, because no one has ever done this before. Not a lot of people can say they've done their first year of middle school all virtual.

It actually made it exciting. And we're still going strong.



In my English class I wrote a piece

and made a video about the Harlem Renaissance, and I got 100 on the project. I focused mainly on the art that the Harlem Renaissance made. One of the poems that really influenced me was "Calling Dreams" by Georgia Douglas Johnson. I worked really hard to get everything in my video and writing grammatically correct. I'm a big perfectionist, and every time I'd record the video if I messed up I had to restart. I did it at least 20 times until I finally got it right.

Measuring Success in 2021

Last year EL Education continued to lead the field and expand our reach. We see the measure of our impact mirrored back to us by external validation, by the steady increase in the adoption of our curricula, and—perhaps most importantly—by our own rubric for success: the continued demonstration of the three dimensions of student achievement.

External Validation

1

SElect Designation

In 2021, the Collaborative for Academic, Social, and Emotional Learning (CASEL), the nonprofit that founded the field of SEL, gave EL Education its highest rating, SElect, reserved for programs that meet or exceed all of CASEL's rigorous criteria for SEL-based education.

2

EdReports "All Green" Review

EdReports.org, a national nonprofit that independently reviews instructional materials for quality and rigor, rated EL Education Grades 6-8 Language Arts Curriculum (Second Edition) with a nearly perfect "all green" score in every category. The review joins prior reviews of K-2 and 3-5 editions, to make the [EL Education K-8 Language Arts Curriculum one of the only "all green" curricula nationwide.](#)

3

Teacher of the Year

EL Educator Autumn Rivera was named Colorado Teacher of the Year. Rivera, 6th grade science teacher at Glenwood Springs Middle School in the Roaring Fork district, was also one of four finalists for the National Teacher of the Year Award. Rivera joins six other EL Education teachers who have been named State Teacher of the Year in the last decade. "EL Education is such an amazing opportunity for teachers and students," Rivera said. "No longer is school a test, test, test atmosphere, but instead is a place where all types of learning are celebrated."

Expanding Our Reach

The evidence of EL Education's impact is clear from the growth of our presence in schools nationwide. In 2021, we reached an estimated **1 million students** through our curriculum and education resources, including our books, videos, and collection of high-quality student work.

EL Education Dimensions of Student Achievement

Ultimately, we measure impact by our own definition of student success, and this is what sets EL Education apart. Our whole-child approach is unique because it doesn't sacrifice rigor and academic excellence.



1

MASTERY OF KNOWLEDGE AND SKILLS

- Demonstrate proficiency and deeper understanding
- Apply their learning
- Think critically
- Communicate clearly

2

CHARACTER

- Work to become effective learners
- Work to become ethical people
- Contribute to a better world

3

HIGH-QUALITY STUDENT WORK

- Create complex work
- Demonstrate craftsmanship
- Create authentic work



LAUREN LOY

Grade: 12

School: Big Pine High School / Big Pine, CA

EL Education School Partner fostering positive character, team building, and habits of work with its Warrior Code

I come from a small community,

and a proud tribe. I have worked with my tribe since I was born, growing into a member of the community. I have woven baskets out of cattails by the river. I have picked pine nuts and gathered tea in the mountains just as my ancestors have done for thousands of years. I have had so many unique experiences because of my home, school, and culture. That's why I have adored my school I have attended since preschool. EL Education teaches kids about Warrior Code (our habits of scholarship) and it challenges us to be our best.



Alice Piper's story and our school honoring it

are very important to me. Alice Piper was a young Native American woman who wanted to attend Big Pine High School in 1924. She was denied because state law prohibited Native Americans attending the public school. Alice Piper sued the school district saying the state law making separate schools for Indian children was unconstitutional. The State Supreme Court ruled in her favor.

Our Top 5 Lessons

As an organization of educators, we have always focused on continuous improvement. We're always committed to deepening our knowledge, because that deepens our practice. Research is built into the foundation of our work with our partner schools. The continuous improvement we're able to achieve is built on the constant generation of research-driven proof points. Here are five of the strongest:

1

Our curriculum plus coaching has an impact on student achievement.

A rigorous evaluation of the **Teacher Potential Project** by Mathematica Policy Research found that higher student literacy achievement results from combining **EL Education's** top-rated English Language Arts curriculum with actionable professional learning for teachers. After just one year of participating in the new initiative, teachers show marked improvement in classroom practices and engagement. After two years of participation, student outcomes on state ELA assessments are significantly higher.

2

EL Education students report a more positive learning experience than their peers...

The Excellence in Character Education (ExCEL) study, launched in 2019, showed that EL Education students reported a greater sense of purpose compared to their peers. EL Education students were also more likely to say that their teachers cared about them.

3

...and EL Education teachers report a positive learning climate, too.

When teachers thrive, so do students—whose experience is most strongly influenced by their teachers. The ExCEL study found that EL Education teachers reported more positive relationships and a greater sense of shared leadership than teachers in comparison schools.

4

Rigorous instruction matters for student achievement.

When we ask more of students, they achieve more. As one of our partner school's principals put it, "[EL Education's] curriculum was harder, but after the first semester when interim assessment scores came back, [our teachers] were convinced of its value."

5

Instruction informed by the science of reading is the only proven way to ensure students become proficient readers and confident learners.

The Reading League Journal confirmed years of research showing that *"when the science of reading is applied, 80-85% of children will learn to read well if provided with evidence-based classroom reading instruction from a highly knowledgeable teacher."* EL Education's K-2 Reading Foundations Skills Block and Content-Based Literacy curriculum are steeped in the science of reading comprehension. They are the key to our students' success.



Lighthouse Community Public School, an EL Education school in Oakland, CA



JASPER COX

Grade: 7

School: The Springfield Renaissance School / Springfield, MA

EL Education Credentialed School and home of the
2018 Regional Magnet School Principal of the Year

School should not just be

a place to learn, but a place where students want to keep coming back because it is a place that makes them feel understood, safe, supported, and respected. When I have a sense of belonging, I feel comfortable and safe enough to share my voice.



I want to help be a voice for those

in the disability and LGBTQ+ community. This year, I was elected by students to become Class Ambassador to work with other members of my school to make it a more welcoming environment. I also worked with staff at the school to start an after-school art program so that students could connect and be together during remote learning.

Who We Serve

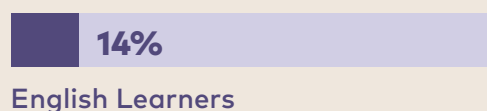
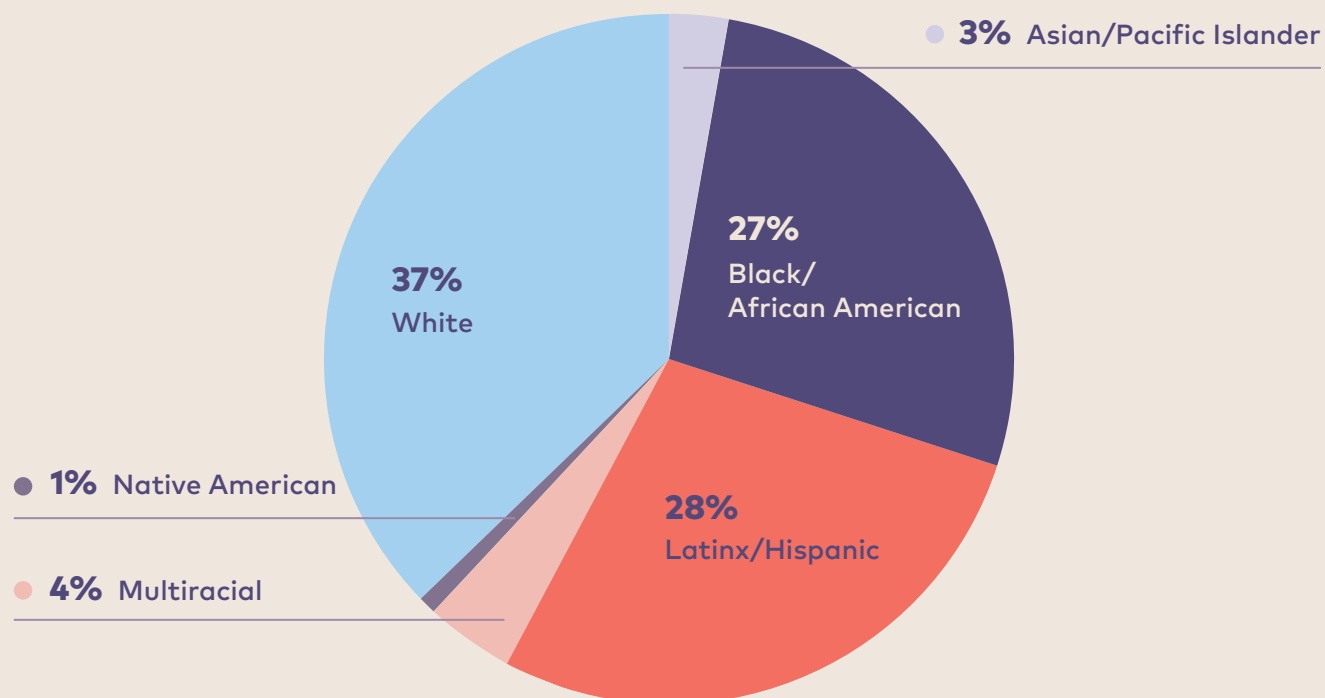
The pandemic has revealed what we at EL Education have always believed—social, emotional, and academic development are deeply intertwined. We are bringing this proven educational approach to public schools at scale, and we are helping to change outcomes for more students than ever before.

400,000+
STUDENTS

27,000+
TEACHERS

1,000+
SCHOOLS ACROSS
32 STATES

Demographics of Students We Serve



Growing Partnerships in 2021

2021 saw EL Education growing and expanding our partnerships with school systems in exciting ways. We're working in new places with new partners that have adopted our curriculum and coaching, forging new relationships with schools and districts across the country. In 2021, we launched new partnerships with **Boston Public Schools**, **Charleston County School District**, and the **NYC Department of Education**, and expanded our partnerships with **Michigan City Area Schools** and **Oakland Unified School District**, just to name a few.

“EL Education is about ensuring students are thinking critically and engaging with culturally relevant materials. Students will have rich, authentic reading and writing experiences, and everything they do will have a lens on equity.”

Dr. Kyla Johnson-Trammell
Superintendent, Oakland Unified School District

Spotlight: New York City

EL Education has been committed to serving students in our nation's largest school district for over 20 years. Through our decades-long partnership with NYC Outward Bound Schools, New York City has been home to exceptional EL Education Schools. More recently, our literacy curriculum has taken off, broadly adopted by hundreds of schools across the district, and with support from **Robin Hood Learning + Technology Fund**, we have been supporting high-need schools in piloting innovative instructional resources that boost literacy of low-income students.

In 2021, we launched a new engagement with the NYC Department of Education focused on developing teachers.

We began a series of high-level professional development sessions open to all educators across the entire New York City school system. Over the course of six months, we facilitated 47 sessions with more than 1,100 participants. The sessions were cumulative, building on knowledge and skills throughout the course of the program.

This is the first time we've ever implemented something this ambitious at scale in partnership with the district. The program was a huge success and there's even more to come as we further deepen this partnership.



KAYLA MITCHELL

Grade: 11

School: Harborside Academy / Kenosha, WI

EL Education Credentialed School proudly celebrating over
93% graduation rate in 2021

Humans were not made to be the same,

we were all made to stand out. We spend so much time at school! From classes to extracurricular and after-school activities, we really need that inclusive support at school. It shows students that no matter their race, religion, sexual orientation, gender—there should be space for everyone.



My teachers bring my identity into my learning

through our curriculum. In 10th grade English we read Street Love, which is a remix of Romeo and Juliet centered around the Harlem Renaissance.

Magic in Michigan City

Nestled on the shores of Lake Michigan between Chicago and South Bend sits **Michigan City**, Indiana. It's an industrial town with a school district that serves over 5,000 students across 12 schools. At Michigan City Area Schools (MCAS) something magical is happening.

What started out as a pilot rollout

of the **EL Education** K-8 Language Arts curriculum in 2019, has grown into a unique partnership grounded in strong relationships. It's been a collaborative journey to develop a multi-year plan tailored to the goals and vision of MCAS to increase student engagement and center student voices, while reaching toward rigorous academic achievement and community impact through learning.

Initially, the **EL Education** curriculum was piloted across approximately 20% of the district. Over the course of that year, teachers in classrooms where the curriculum was introduced saw students

taking leadership in their learning. For Cathy Bildhauser, Curriculum Director at MCAS, it was exciting.

"I sat down on the floor next to a group of four students," she recalls. "One of the students was struggling with the material. Instead of business as usual, the other students did everything they could to make sure that student was able to find success in the lesson."

"It was in that moment that it struck me that something magical was happening in our classrooms."

Cathy Bildhauser
Curriculum Director, Michigan City Area Schools (MCAS)

The next year, the **EL Education** curriculum was adopted in elementary and middle schools district-wide at MCAS. During that unprecedented virtual year, EL Education provided training and support for educators faced with the daunting task of engaging students with a new curriculum in the midst of a pandemic.

“It was a little difficult,” said Lucas Snyder, Principal at Barker Middle School. “But we still saw some growth. We still saw students more invested in learning.”

Going into the next school year, MCAS wanted to strengthen support for educators and students. Working together with the district, EL Education mapped out a partnership plan that would introduce and infuse EL Education Core Practices throughout the schools. And it centered on Crew.

In 2021, Crew was introduced in schools district-wide at MCAS—something EL Education has never done before at this scale with a district partner. Crew gives students at MCAS a safe, supportive space to be heard and grow relationships with each other and their teachers.

“[The purpose of] Crew is to build better relationships with your peers and to get through a problem.”

5th grade student
from Lake Hills Elementary School

Crew isn’t just limited to the classroom. Teachers, staff, principals, and administrators have their own Crews. For Crew culture to really take root, it needs to be embraced and modeled by adults. And that’s exactly what’s been happening in Michigan City. Principals set the vision for Staff Crew, and then delegate leadership to different teachers at staff meetings.

It builds on the strong sense of camaraderie already present in the district to ensure real purpose, agency, and belonging for all adults and children at school.

“Crew is part of the DNA of our school now,” said Josh Malone, principal at Krueger Middle School. “Kids are excited to get to class.”

“We have students back in the classrooms full time now and our engagement levels are through the roof. Our students have more of a voice.”

Lucas Snyder
Principal, Barker Middle School

The ongoing collaboration between EL Education and Michigan City Area Schools continues to grow. In the 2022-2023 school year, to elevate student voice and drive family engagement, the district will roll out Student Led Conferences, which put students in the driver’s seat presenting and evaluating their own work alongside families. The district and EL Education will further measure and analyze systemwide impact on learning environments, instructional practices, and student outcomes. These are important steps on a shared journey to unleash the full potential of all students to thrive as learners and citizens. And on this journey, there are no passengers.

We are all Crew.

Credentialed Schools

EL Education Credentialed Schools Expand the Definition of Student Success

EL Education's approach to reinventing schools focuses on an expanded definition of student achievement that combines student character and high-quality work with mastery of knowledge and skills. Schools that have earned the EL Education Credential have demonstrated remarkable impact with all students in each of these areas. These schools serve as collaborators with EL Education to develop innovative education resources and curriculum, and often pilot these new materials in order for EL Education to hone our instructional practices.



Atwater Elementary School, an EL Education Credentialed School in Shorewood, WI

Our strategic plan sets a goal to grow our diverse portfolio of Credentialed Schools to 100 schools that achieve excellent, equitable outcomes across our expanded view of student achievement. As an initial step toward accomplishing this goal, in 2021 EL Education engaged students, educators, and families in a design process to make Credentialing more equitable, authentic, and accessible to more schools.

To date, 43 schools across the country have attained the EL Education Credential. These schools provide a unique and transformative educational experience for their students.

Atwater Elementary School
in Shorewood, Wisconsin
earned the EL Education
Credential in 2021.

“Our partnership with EL Education has truly enhanced and highlighted many aspects of what has made Atwater special for many years.”

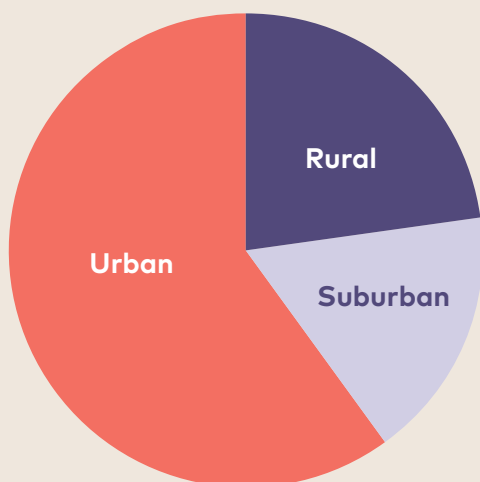
Nate Schultz, Principal
Atwater Elementary School

EL Education Credentialed Schools are some of the most successful schools in the nation.

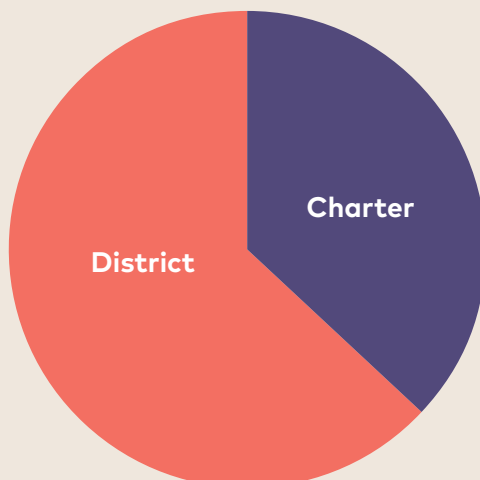
- Students outperform their district and state peers in math and reading
- Students have a greater sense of purpose in their learning
- 94% of students graduate high school, a higher rate than the national average

EL Education Credentialed Schools are diverse in their governance structure and in the communities they serve.

Locale



Governance



Amana Academy, an EL Education Credentialed School in Alpharetta, GA



AMELIE GHIRARDO

Grade: 12

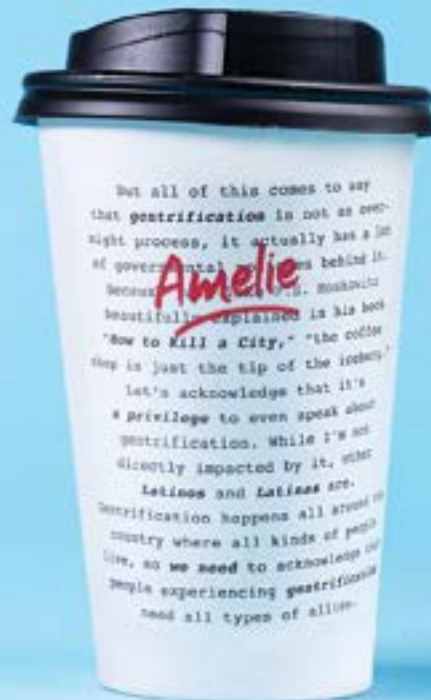
Metropolitan Expeditionary Learning School (MELS) / Queens, NY

EL Education Credentialed School named a Showcase School
by the NYC Department of Education

I thought a lot about my identity

as a white Latina over the pandemic. This year for my speech team, I wrote a speech about gentrification and how it impacts our city. It was a way for me to think about my identity. I'm Hispanic, but I'm white.

This speech was a way to talk about privilege—and that's a good conversation to have with yourself.



Why don't we ask our dear barista

what this so-called "gentrification coffee" contains so that we can understand what gentrification means?

- Excerpt from Amelie Ghirardo's speech, The New Coffee Shop.

Partnerships with Schools and Districts

EL Education partners with K-12 public schools, both district and charter, as well as whole districts and school networks to transform teaching and learning and improve student outcomes across an expanded view of student success. Active partnerships in 2021 include:

Districts, Charter Management Organizations, and School Networks

Arizona

Sunnyside Unified School District

California

Aspire Public Schools
Bright Star Schools
Escondido Union School District
Mount Pleasant
Elementary School District
Oakland Unified School District

Colorado

Jeffco Public Schools
Roaring Fork Schools

Florida

Hillsborough County Public Schools

Georgia

City Schools of Decatur

Illinois

Dolton Riverdale School District 148
Rock Island-Milan School District

Indiana

Evansville Vanderburgh School
Corporation
Michigan City Area Schools

Iowa

Des Moines Public Schools

Massachusetts

Boston Public Schools
Fitchburg Public Schools
North Middlesex Regional School
District
UP Network

Michigan

Detroit Public Schools
Community District

New York

Kenmore-Town of Tonawanda
Union Free School District
NYC Department of Education
NYC Outward Bound Schools
Pine Bush Central School District
Roosevelt Union Free School
District
Silver Creek CSD
Ulster BOCES
Westhill Central Schools

North Carolina

Charlotte-Mecklenburg Schools
Guilford County Schools
Wake County Public School System

Ohio

Cincinnati Public Schools
Cleveland Metropolitan School District
Lancaster Public Schools

Pennsylvania

Independence Mission Schools
Propel Charter School Network

Rhode Island

Lincoln Public Schools
Westerly Public Schools

South Carolina

Charleston County School District

Tennessee

Hamilton County Schools

Vermont

Hartford School District
Vermont Rural Education Collaborative

Virginia

Richmond City Public Schools

Washington

Anacortes School District

Wisconsin

Eleva-Strum School District

School Partners

Arizona

Glen Canyon Outdoor Academy
Page

California

Big Pine Unified School District
Big Pine

Conway Elementary
Escondido

Grass Valley Charter School
Grass Valley

Lighthouse Community Public Schools
Oakland

Lodestar Community Charter
Oakland

Melrose Leadership Academy
Oakland

Orange County Educational
Arts Academy
Santa Ana

Rosemary Elementary
Campbell

Sierra Academy of Expeditionary
Learning
Nevada City

Sierra Expeditionary Learning School
Truckee

Vallejo Charter School
Vallejo

Ventura Charter School of Arts and
Global Education
Ventura

Colorado

Achieve Academy
Thornton

Adventure Elementary
Denver

Annunciation Catholic School
Denver

Big Thompson Elementary School
Loveland

Centennial Elementary School
Denver

Columbine Elementary School
Denver

**Downtown Denver Expeditionary
Learning School**
Denver

Dutch Creek Elementary School
Littleton

Empower High School
Aurora

Escalante Middle School
Durango

Explore Elementary
Thornton

Fox Creek Elementary School
Highlands Ranch

Glenwood Springs Elementary School
Glenwood Springs

Glenwood Springs Middle School
Glenwood Springs

Joe Shoemaker Elementary School
Denver

Kiva Montessori School
Cortez

Kwiyyagat Community Academy
Towaoc

Lumberg Elementary School
Edgewater

Mapleton Expeditionary School
of the Arts
Thornton

North Routt Community Charter School
Clark

The Odyssey School of Denver
Denver

Park Elementary School
Durango

**Pikes Peak School of Expeditionary
Learning**
Falcon

Pine Lane Elementary School
Parker

Riverview Elementary School
Durango

**Silverton School of Expeditionary
Learning**
Silverton

St. Rose of Lima
Denver

Stevens Elementary School
Wheat Ridge

Summit View Elementary
Highlands Ranch

Tollgate Elementary
Aurora

Trailside Academy
Denver

Welby Community School
Denver

Wellspring Catholic Academy
of St. Bernadette
Denver

William Smith High School
Aurora

Connecticut

Expeditionary Learning Academy
at Moylan School (ELAMS)
Hartford

Illing Middle School
Manchester

Sanchez Elementary
Hartford

South Elementary School
Windsor Locks

West Woods Upper Elementary
Farmington

Delaware

Kuumba Academy Charter School
Wilmington

Georgia

Amana Academy
Alpharetta

Amana Academy West (opening 2022)
Alpharetta

Brighten Academy Charter School
Douglasville

Centennial Academy
Atlanta

Clairemont Elementary School Decatur

Drew Elementary Academy
Atlanta

Glennwood Elementary School
Decatur

Mary McLeod Bethune Elementary School
Atlanta

Michael R. Hollis Innovation Academy
Atlanta

Miles Ahead Charter School
(opening 2022)
Buford

Oakhurst Elementary Decatur

Talley Street Upper Elementary
Decatur

Westchester Elementary School Decatur

Winnona Park Elementary School
Decatur

Idaho

Anser Charter School
Garden City

Palouse Prairie Charter School
Moscow

Sunnyside Elementary
Idaho Falls

Illinois

Chávez Multicultural Academic Center
Chicago

Elgin Math and Science Academy
Elgin

Galapagos Rockford Charter School
Chicago

Kozminski Elementary Community Academy
Chicago

Lincoln Junior High School
Dolton

Polaris Charter Academy
Chicago

Thomasboro Grade School
Thomasboro

Indiana

Edgewood Elementary School
Michigan City

Global Preparatory Academy
Indianapolis

Inspire Academy
Muncie

Knapp Elementary
Michigan City

The Path School
Indianapolis

Pine Elementary School
Michigan City

Springfield Elementary School
Michigan City

York Elementary
Bristol

Iowa

Monroe Elementary School
Des Moines

Maine

Casco Bay High School
Portland

Harpwell Coastal Academy
Harpwell

King Middle School
Portland

Presumpscot Elementary School
Portland

St. George School
Tenants Harbor

West Bath School
West Bath

Maryland

Lillie May Carroll Jackson Charter School
Baltimore

Monarch Academy Glen Burnie Campus
Glen Burnie

Massachusetts

Alma Del Mar Charter School - Frederick Douglas Campus
New Bedford

Alma Del Mar Charter School - Sarah D. Ottiwell
New Bedford

Baystate Academy Charter Public School
Springfield

Christa McAuliffe Charter School
Framingham

Codman Academy Charter Public School
Dorchester

Conservatory Lab Charter School
Dorchester

Four Rivers Charter Public School
Greenfield

Holmes Innovation School
Dorchester

Margarita Muniz Academy
Jamaica Plain

Mohawk Trail Regional School
Shelburne Falls

Old Sturbridge Academy Public Charter School
Sturbridge

The Springfield Renaissance School
Springfield

Michigan

Baldwin Elementary School
Baldwin

Detroit Academy of Arts and Sciences
Detroit

Eagle's Nest Academy
Flint

Flint Cultural Center Academy
Flint

Northport Public School
Northport

Minnesota

New City Charter School
Minneapolis

Open World Learning School
Saint Paul

Schoolcraft Learning Community
Bemidji

New Jersey

Environment Community Opportunity (ECO) Charter School
Camden

Clairemont Elementary School
DecaturDrew Elementary Academy
AtlantaGlennwood Elementary School
DecaturMary McLeod Bethune Elementary
School
AtlantaMichael R. Hollis Innovation Academy
AtlantaMiles Ahead Charter School
(opening 2022)
Buford**Oakhurst Elementary**
DecaturTalley Street Upper Elementary
Decatur**Westchester Elementary School**
DecaturWinnona Park Elementary School
Decatur**Idaho****Anser Charter School**
Garden City**Palouse Prairie Charter School**
MoscowSunnyside Elementary
Idaho Falls**Illinois**Chávez Multicultural Academic Center
ChicagoElgin Math and Science Academy
ElginGalapagos Rockford Charter School
ChicagoKozminski Elementary Community
Academy
ChicagoLincoln Junior High School
Dolton**Polaris Charter Academy**
ChicagoThomasboro Grade School
Thomasboro**Indiana**Edgewood Elementary School
Michigan CityGlobal Preparatory Academy
IndianapolisKnapp Elementary
Michigan CityThe Path School
IndianapolisPine Elementary School
Michigan CitySpringfield Elementary School
Michigan CityYork Elementary
Bristol**Iowa**Inspire Academy
MuncieMonroe Elementary School
Des Moines**Maine****Casco Bay High School**
PortlandHarpwell Coastal Academy
Harpwell**King Middle School**
Portland**Presumpscot Elementary School**
PortlandSt. George School
Tenants Harbor**West Bath School**
West Bath**Maryland**Lillie May Carroll Jackson Charter
School
BaltimoreMonarch Academy Glen Burnie Campus
Glen Burnie**Massachusetts**Alma Del Mar Charter School -
Frederick Douglas Campus
New BedfordAlma Del Mar Charter School -
Sarah D. Ottiwell
New BedfordBaystate Academy Charter
Public School
Springfield**Christa McAuliffe Charter School**
FraminghamCodman Academy Charter
Public School
DorchesterConservatory Lab Charter School
Dorchester**Four Rivers Charter Public School**
GreenfieldHolmes Innovation School
DorchesterMargarita Muniz Academy
Plain
JamaicaMohawk Trail Regional School
Shelburne FallsOld Sturbridge Academy Public
Charter School
Sturbridge**The Springfield Renaissance School**
Springfield**Michigan**Baldwin Elementary School
BaldwinDetroit Academy of Arts and Sciences
DetroitEagle's Nest Academy
FlintFlint Cultural Center Academy
FlintNorthport Public School
Northport**Minnesota**New City Charter School
Minneapolis**Open World Learning School**
Saint PaulSchoolcraft Learning Community
Bemidji**New Jersey**Environment Community Opportunity
(ECO) Charter School
Camden

New York

Brighton Academy
Syracuse

Brooklyn Collaborative Studies
Brooklyn

Channel View School for Research
Rockaway Beach

Community School for Social Justice
Bronx

Dr. Walter Cooper Academy
Rochester

East High School
Rochester

**Eugenio Maria de Hostos
Charter School**
Rochester

Expeditionary Learning Middle School
Syracuse

Gaynor McCown School
Staten Island

Genesee Community Charter School
Rochester

**Genesee Community Charter School
(Flour City)**
Rochester

Hyde Leadership Charter School
Brooklyn

I.S. 206 Ann Cross Mersereau
Bronx

**Institute for Health Professions
at Cambria Heights**
Queens

The James Baldwin School
New York City

Kurt Hahn School
Brooklyn

**Launch Expeditionary Learning Charter
School**
Brooklyn

Leaders High School
Brooklyn

M.S. 370 - Leaders of Tomorrow
Bronx

M.S. 390
Bronx

M.S. 839
Brooklyn

Manhattan Charter I

New York City

Manhattan Charter II
New York City

**Marsh Avenue Expeditionary Learning
School (MAELS)**
Staten Island

McCarthy at Beard School
Syracuse

**Metropolitan Expeditionary Learning
School (MELS)**
Queens

Niagara Charter School
Niagara Falls

North Bronx School of Empowerment
Bronx

P.S. 24
Brooklyn

P.S. 63 - Authors' Academy
Bronx

P.S. 112 - Bronxwood
Bronx

**P.S. 204 - Vince Lombardi Elementary
School**
Brooklyn

P.S. 214
Bronx

**P.S. 306 - New York City Academy for
Discovery**
Queens

P.S. 368 - The William Lynch School
New York City

P.S. / M.S. 280
Bronx

P.S. / I.S. 30 - Mary White Ovington
Brooklyn

Ripley Central School District
Ripley

Tapestry Charter School
Buffalo

**Washington Heights Expeditionary
Learning School (WHEELS)**
New York City

West Buffalo Charter School
Buffalo

West End Secondary
New York City

World of Inquiry School No. 58
Rochester

North Carolina

Bruns Avenue Elementary
Charlotte

Evergreen Community Charter School
Asheville

Franklin School of Innovation
Asheville

Peck Elementary
Greensboro

Renaissance West STEAM Academy
Charlotte

Wilburn Elementary School
Raleigh

Ohio

The Charles School
Columbus

Citizens Leadership Academy
Cleveland

Citizens Leadership Academy East
Cleveland

**Citizens Leadership Academy
Southeast**
Cleveland

Clifton Area Neighborhood School
Cincinnati

College Hill Fundamental Academy
Cincinnati

Graham Elementary and Middle School
Columbus

The Graham School
Columbus

Mt. Washington School
Cincinnati

Rees E. Price Academy
Cincinnati

Oregon

**Beaverton Academy of Science and
Engineering**
Beaverton

City View Charter School
Hillsboro

Columbia City Elementary
Columbia City

Kairos PDX Learning Academy
Portland

**Rimrock Expeditionary Alternative
Learning High School**



MOSES JACKSON

Grade: 7

Capital City Public Charter School / Washington DC

EL Education Credentialed School recognized for 100% college acceptance and as a model for diversity and inclusivity

EL Education's Student Advisory Council

last year really helped me grow and stay motivated. It gave me a lot of responsibility during quarantine, which was good because I had more control over things. Being on the Council helped me build my character and made me more comfortable speaking with adults and sharing my ideas and my skills.



It was great to play basketball again

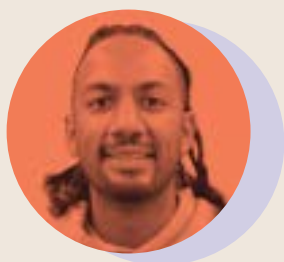
when we started going back to school in person. But I've also learned how to apply myself to other areas at school. I can bring those two things together.

Educator Awards

Klingenstein Teacher Award and Silverberg Leadership Award

The annual EL Educator Awards celebrate teachers and school leaders who bring our expanded vision for student achievement to life. The 2021 recipients exemplify the exceptional educators for which EL Education is known.

2021 Klingenstein Teacher Award



**Erick Espin, History Teacher, WHEELS,
A NYC Outward Bound School (New York, NY)**

"I create a culture of belonging by learning and honoring each person's name. I see the name, its pronunciation, and its story, as a way of letting each student know they are respected and valued in this space. That first step helps establish the foundation for a community of belonging. I bring my personal identity to school because I want my students to feel they belong so they can be their authentic selves, and they deserve the same from me."

2021 Silverberg Leadership Award



**Minh-Trâm Nguyễn, Principal,
EnCompass Academy (Oakland, CA)**

"The foundation of good teaching and learning starts with connections and community, with students being seen and people feeling like they have a voice and are able to take risks in their learning, and take feedback. When you make a mistake or fail, you get right back up, and you use that growth mindset to get better every day because that's all we have."

The Klingenstein Teacher Award is made possible with generous support from the Klingenstein Foundation in honor of LEE KLINGENSTEIN (1927-2020), Founding Chair of the EL Education Board of Directors.

The Silverberg Leadership Award is made possible with the generous support of IRWIN SILVERBERG, member of the EL Education Board of Directors.

Thank You to Our Supporters

We are deeply grateful for the support of many organizations and individuals who help EL Education transform students' lives with our educational approach, resources, and curriculum.

Thank you for your commitment to an expanded vision of achievement for all students. Our work would not be possible without your generosity.



Lighthouse Community Public School,
an EL Education School in Oakland, CA



Two Rivers Public Charter School, an EL Education Credentialed School in Washington, DC

A Year of Historic Support

In 2021, we launched a \$50 million campaign to innovate, evaluate, and scale our solutions with partners across the country. Believing in the power and potential of EL Education, early supporters made commitments totaling more than \$25 million in the first year of our campaign. This support includes an extraordinary \$10 million gift from MacKenzie Scott, one of the largest gifts our organization has ever received, and significant investments from the Bezos Family Foundation, Bloomberg Philanthropies, Carnegie Corporation of New York, the Bill & Melinda Gates Foundation, the William and Flora Hewlett Foundation, Klingenstein Foundation, the Robin Hood Learning + Technology Fund, Charles and Lynn Schusterman Family Philanthropies, and Harriet L. Weissman. We will use this incredible momentum to deepen our impact for lasting change.

“My husband Paul Weissman shared my passion for helping young people realize their dreams, and it is a privilege to support EL Education. Serving on the Board of Directors has enriched my life, and I will continue to find great joy in this extraordinary organization as the years go by.”

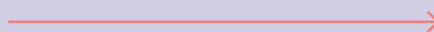
Harriet L. Weissman
EL Education Board Member



“We are proud to support EL Education in their work to create high-quality English Language Arts curriculum and professional learning that supports teachers in providing engaging, affirming and standards-aligned teaching for all students. Our support of EL Education is rooted in our shared belief that all students, particularly Black and Latino students who have been historically underserved, deserve and will thrive with an education that challenges them to grow and prepares them to succeed.”

Judy Wurtzel
Charles and Lynn Schusterman Family
Philanthropies

The following list recognizes philanthropic commitments made in 2021, including multi-year investments in our strategic plan.



The Springfield Renaissance School, an EL Education Credentialed School in Springfield, MA

Lead Supporters

\$1,000,000 and up

Bezos Family Foundation

Carnegie Corporation of New York

Bill & Melinda Gates Foundation

William and Flora Hewlett Foundation

Klingenstein Foundation, in honor of Lee P. Klingenstein

Charles and Lynn Schusterman Family Philanthropies

MacKenzie Scott

Harriet L. Weissman

\$500,000 to \$999,999

Bloomberg Philanthropies

Robin Hood Learning + Technology Fund

\$100,000 to \$499,999

Booth Ferris Foundation

Buckley Foundation

Detroit Children's Fund

James and Marsha McCormick

R. Bruce and Melissa Rich

Tracey and Phillip Riese

Irwin and Carol Silverberg

Virginia H. and Geoffrey F. Worden

Alfred and Patricia Zollar

Stewards

\$25,000 to \$99,999

Jewelle and Nathaniel Bickford
 Ravenel B. Curry, III
 Estée Lauder Companies Charitable Foundation
 Fund for Teachers
 Todd Gomez and Janis Smith-Gomez
 Allen and Jane Grossman

William E Hixson Foundation
 Johnson Family Foundation
 Patricia Klingenstein
 Straus Family Foundation
 Susan Wilen

\$10,000 to \$24,999

Anonymous
 David and Alexandra Drucker
 Gilles Gade
 Ann Kaplan

Andrew and Julie Klingenstein
 Penske Foundation
 Lynn Weiner

\$1,000 to \$9,999

Anonymous
 Frances C. Ashley
 Priscilla H. Blum
 Kevin Bone
 Buckingham Browne & Nichols School
 Naomi and Teddy Drew
 Finlay Family
 Gamba Family Foundation
 Patsy and Ed Garno
 Stella and Charles Guttman Foundation
 Scott and Hannah Hartl
 Hugh J. Helfenstein

Joseph Levine and Jane Cyphers
 Jean Meyer Martin
 Louis and Barbara Perlmutter
 The Muriel F. Siebert Foundation
 Albert Sisto
 Richard and Estelle Vernon
 Virginia Welch
 Anita and Byron Wien
 Winingder Family Fund
 David Youngworth
 Annie Ziesing

Stewards

Up to \$1,000

AmazonSmile Foundation
Anonymous
Kenneth Bartels and Jane Condon
Jeffrey and Michele Bernstein
Augustine Bottorf
Susan Wolf Dittkoff
Benjamin Doren
Peter Garbus
Eric Jurasin
The Kaminsky Family
Adam, Jillian, River, and Sonora Krüsi-Thom
Sandy Lenhart

Kate Liebhold
Gordon and Blair MacInnes
Steven Melzer
Suzanne Schwerin
Jean Shanks
J.P. and Kaki Smith
Bunny Torrance
John and Kitty Webster
Alan and Barbara Weinschel
Mr. and Mrs. William Wigton
Safiyyah Williams
Robert E. Zaret

In Memoriam: Roland S. Barth (1937-2021)

We are grateful to those who chose to honor our friend Roland Barth by making a gift to EL Education. An education pioneer, **Roland S. Barth** devoted his career to improving public education and fostering communities of life-long learning. He greatly influenced the work of EL Education, and served on our Board of Directors from 2003-2017.

Jan Beaven	Kim Marshall
Ana Conboy	Dixie Mills
Christian Genetski	Jennifer Moniz
The GIRE Team	Margaret Newhouse
Jack and Brownie Jelsema	Fritz Okie
Susannah Kerest	Galen and Susan Todd

"[Schools] can become cultures where youngsters are discovering the joy, the difficulty, and the excitement of learning and where adults are continually rediscovering the joy, the difficulty, and the excitement of learning. Places where we are all in it together—learning by heart."

Roland Barth, *Learning By Heart*

Pro Bono

Hall Capital Partners LLC

Weil, Gotshal & Manges LLP

Research Advisors

Angela Duckworth

Rosa Lee and Egbert Chang Professor of Psychology, University of Pennsylvania,
Founder and CEO, Character Lab

Camille A. Farrington

Managing Director and Senior Research Associate, University of Chicago
Consortium on School Research

Howard Gardner

John H. and Elisabeth A. Hobbs Research Professor of Cognition and Education,
Harvard Graduate School of Education

Daren Graves

Associate Professor of Education and Social Work, Simmons University
Adjunct Lecturer of Education, Harvard Graduate School of Education

Robert J. Jagers

Vice President of Research, Collaborative for Academic, Social, and
Emotional Learning (CASEL)

Jal Mehta

Professor of Education,
Harvard Graduate School of Education

Jason Okonofua

Assistant Professor, Psychology Department,
University of California, Berkeley

David Paunesku

Co-Founder and Executive Director, PERTS,
Stanford University

Sara Rimm-Kaufman

Professor, Curry School of Education,
University of Virginia

Scott Seider

Associate Professor, Applied Developmental & Educational Psychology,
Lynch School of Education and Human Development, Boston College

Warren Simmons

Senior Policy Advisor, National Education Policy Center, School of Education,
University of Colorado, Boulder

Gregory Walton

Associate Professor of Psychology, The Michael Forman University
Fellow in Undergraduate Education, Stanford University

David Yeager

Associate Professor of Psychology,
University of Texas at Austin

Board of Directors

R. Bruce Rich, Chair

Scott Hartl, President & CEO

Tracey Riese, Vice Chair

Todd Gomez, Treasurer

Jewelle Bickford

Jean-Claude Brizard

Susan Wolf Dittkoff

Camille A. Farrington

Allen Grossman

Irwin Silverberg

Alexandra Buckley Voris

Harriet L. Weissman

Susan J. Wilen

Virginia Hill Worden, Chair Emerita

Jo Ziesing

Alfred Zollar

*Institutional affiliations listed
for purposes of identification.*

Statement of Activities

For the Year Ended August 31, 2021

	Net Assets without Donor Restrictions	Net Assets with Donor Restrictions	Total
Revenue, support and gains			
School, consulting, and product revenue	\$18,238,421	-	\$18,238,421
Contributions and grants	\$2,043,278	\$7,956,976	\$10,000,254
PPP Loan Forgiveness	\$2,445,446	-	\$2,445,446
Other income	\$36,372	-	\$36,372
Investment income	\$744,806	-	\$744,806
Net assets released from donor restrictions	\$3,568,437	(\$3,568,437)	-
Total revenue, support and gains	\$27,076,760	\$4,388,539	\$31,465,299
Expenses			
Program services	\$14,924,986	-	\$14,924,986
General management and administration	\$5,443,882	-	\$5,443,882
Fundraising	\$896,630	-	\$896,630
Total expenses	\$21,265,498	-	\$21,265,498
Change in net assets	\$5,811,262	\$4,388,539	\$10,199,801
Net assets, beginning of year	\$11,478,769	\$3,468,949	\$14,947,718
Net assets, end of year	\$17,290,031	\$7,857,488	\$25,147,519

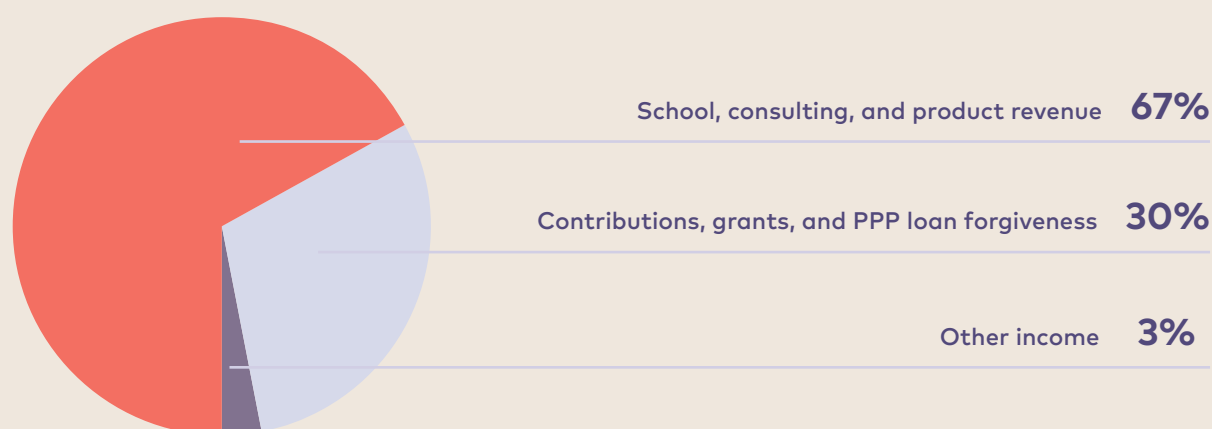
An earlier version of this report contained errors on this page. This reprint has been corrected.
If you have questions, please email development@ELeducation.org.

Financial Stability

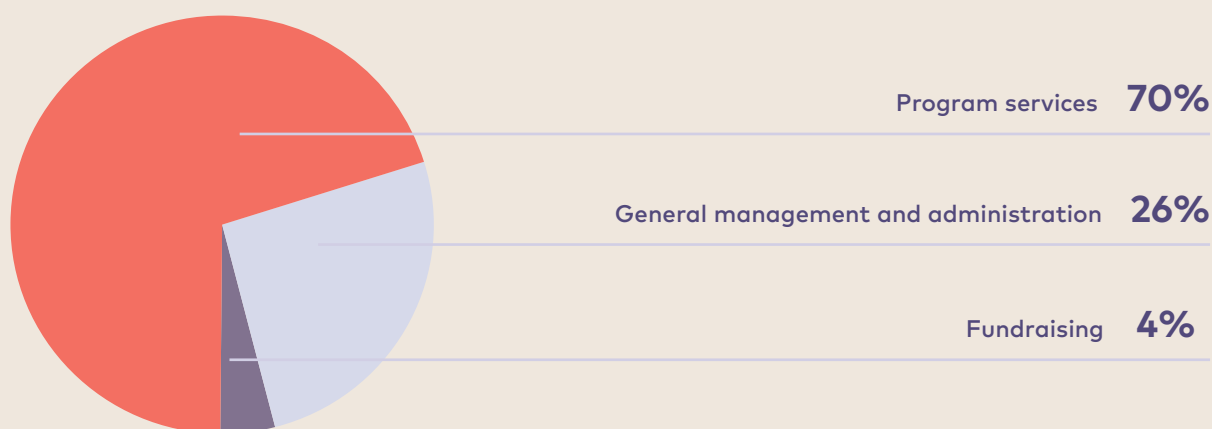
EL Education's strong financial position reflects our diversified, sustainable sources of revenue.

Our financial sustainability is critically important to our ability to deliver high-quality programs and services to public schools and districts across the country.

2021 Sources of Revenue



2021 Allocation of Expenses



All information from EL Education's independent audit report for the 2021 fiscal year ending August 31, 2021.

Students from Mundo Verde Bilingual Public Charter School participate in **Better World Day**.

Every year on Better World Day, students present learning projects and engage in acts of service that demonstrate the power of the EL Education vision for public school: a place where children become great scholars and active citizens with the capacity to make a positive impact.



Mundo Verde Bilingual Public Charter School,
an EL Education School in Washington, DC

Our Vision

When students and teachers are engaged in work that is challenging, adventurous, and meaningful, learning and achievement flourish.



Contact Us

EL Education

247 W. 35th Street, 8th Floor

New York, NY 10001

(212) 239-4455

development@ELeducation.org



ELeducation.org

Reprint

 /ELeducationInc

 @ELeducation

 @ELeducation