

What Matters Most





Our Reach

440,000+ Students

30,000+ Teachers

1,100+ Schools

Dear friends,

2020 was a year unlike any other for our organization, our schools, and our world. Last spring, when our nation's schools closed—for the first time in our lifetimes—district and school leaders, teachers, and students were left to navigate extraordinary challenges. Those challenges proved to be inseparable from vast structural inequities in our country.

As a national nonprofit that partners with schools and districts serving more than 440,000 students, EL Education supported myriad local responses, as diverse as they were heroic. We convened leaders in communities of practice, and we rapidly adapted our literacy curriculum for remote teaching, making it available as a free resource that would be visited more than one million times. When educators began to plan for the 2020-2021 school year, they focused on **what matters most**: creating equitable learning environments; caring for students' well-being; prioritizing relationships that foster agency and belonging; and equipping teachers with high-quality core curriculum. These priorities have been central elements of EL Education's approach for nearly 30 years.

In this Annual Report, we highlight a few of these stories, as told by our partners, including, among others:

- **Dr. Yvette Stewart**, Director of Elementary Teaching and Learning for Hamilton County Schools in Tennessee, one of several districts that launched a major partnership with EL Education in 2020: “Literacy is the key that opens all the doors to opportunity.”
- **Patrick Finley**, Co-Principal of MELS, an EL Education Credentialed School in Queens, reflecting on the bedrock of relationships there: “Even before the pandemic, Crew was the lifeblood of our school, the foundation of our enduring success.”
- **Bill Haithcock**, Principal of Harborside Academy, an EL Education Credentialed School in Kenosha, Wisconsin, speaking about horrific racial violence that unfolded outside the school, “In a moment when I felt lost, the EL Education network was my lifeline.”

A year later, as most of our nation's schools have returned to in-person learning, **we have an unprecedented opportunity—and EL Education an even deeper commitment—to reimagine our education system for equity**. That transformed system prepares all young people to thrive in school, at work, and in their communities, with the commitment and capacity to create a better, more just world—with race and family income having no predictive power with respect to these student outcomes.

Thank you for your partnership in realizing this vision.



Scott Hartl
President & CEO



R. Bruce Rich
Chair, Board of Directors



Literacy Opens Doors, Even in a Pandemic

Literacy is the key that opens all the doors to opportunity. If you can read, then you can make decisions, be independent, and act to have the life you want. That’s exactly why implementing a high-quality curriculum is what matters most in the middle of a pandemic,” points out Dr. Yvette Stewart, Director of Elementary Teaching and Learning in Tennessee’s Hamilton County Schools that serves Chattanooga and surrounding rural areas. Hamilton County Schools is the fastest improving district in the state.

After the COVID-19 pandemic forced schools across the country to close their doors, school leaders faced a cascade of uncertainties about how to meet students’ needs—everything from food and shelter to internet access to best practices in remote teaching. In the face of uncertainties, leaders needed to make decisions that would help students weather the challenges of a shapeshifting crisis with an uncertain endpoint. To meet the moment, leaders in large public school districts—including those serving Des Moines, Iowa; Richmond, Virginia; Cleveland, Ohio; and Chattanooga, Tennessee—chose to prioritize their commitment to excellent student achievement by adopting EL Education’s research-informed Language Arts curriculum.



Hamilton County Schools
Southeastern Tennessee
79 Schools
45,000 Students



From the beginning, leaders of Hamilton County Schools have been staunch advocates for the curriculum’s transformative power. “When we first began our conversation with EL Education in 2019, we couldn’t have anticipated a pandemic,” Stewart says, “but now we say, ‘Don’t let a good pandemic go to waste.’ What’s always best for kids is a curriculum that maintains grade-level expectations and engages them in knowledge-rich texts, conversations, and writing.”

Implementing a new curriculum amidst transitions from remote to in-person to hybrid learning has been challenging, but fruitful. Hamilton County introduced the new curriculum to teachers with a virtual training led by EL Education coaches. “They helped teachers make solid instructional decisions based on data. As a team, we could do what no one teacher could have accomplished if all we’d done is hand them a curriculum,” says Stewart.

In a time of increasingly inequitable barriers to learning, Stewart and her colleagues are laser-focused on ensuring high-quality experiences

for all students in a county with both racial and economic diversity (30 percent Black, 14 percent Hispanic, 54 percent White, and 38 percent eligible for free or reduced-price lunch).

Based on the first round of interim assessment data, Stewart is cautiously optimistic. “Our grade 3-5 data show that we’ve been able to maintain students’ learning progress despite the disruptions.” Social and emotional learning is integrated throughout EL Education’s curriculum and is designed to empower students to thrive in the face of challenges, whether they are related to gaining reading skills or life skills in a pandemic. Stewart notes that the district is streamlining services to marginalized students by “building coalitions between the district’s Equity Office, programming for social and emotional learning, and academic instruction.” For the future, she says, “I’m going to keep being relentless until the numbers pan out and every child can read at grade level.”



"The one thing we know for sure is that literacy is the key that opens all the doors to opportunity. If you can read, then you can make decisions, be independent, and act to have the life you want."

Dr. Yvette Stewart

Director of Elementary Teaching and Learning
Hamilton County Schools
Hamilton County, TN

Our Vision

EL Education partners with schools and districts who are committed in word and deed to high-quality education and equitable excellent outcomes for all students. By aligning on a shared vision focused on three dimensions of student achievement—mastery of knowledge and skills, character, and high-quality student work—we honor students' full humanity.

We embrace **a vision** of education as a powerful engine for disrupting structural racism, and fulfilling our nation's promise of equal opportunity for all.

Educational equity means that **all children** experience:

1

Instruction and assessment that challenge, engage, and empower learners

2

Access to standards-based, content-rich, culturally affirming curriculum

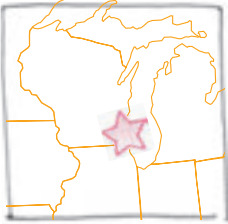
3

School culture that fosters positive identity, belonging, agency, and purpose

4

Explicit anti-racist discussion, practice, and action

Forging a New Path with Equity at the Center



Kenosha Unified School District

Kenosha, WI

In schools across the country, Black students attend class after watching another Black body meet a devastating fate. The words “I can’t breathe” replay in their minds as their teacher discusses their next assignment. The picture of a knee wrapped in a police uniform flashes before their eyes as they attend science lab. They picture their father, brothers, mother, and friends and think, “Will they be next... or will I?”

It’s an internal dialogue that is all too familiar to students of color. It’s one that was intensified for many as the coronavirus pandemic disproportionately ravaged Black, Latinx, and Indigenous communities.

In a year of racial reckoning, schools in the EL Education network from Rochester, New York to Kenosha, Wisconsin and Philadelphia, Pennsylvania worked together to create brave and safe spaces for their students and communities as racial injustices unfolded across the country and in their backyards.

On August 23, 2020, in Kenosha, Jacob Blake was shot in the back seven times by a police officer, leaving him severely injured and partially paralyzed. The shooting, and the unrest that followed, unfolded outside the doors of EL Education schools in the city.

“Within a day, partners from within the EL Education network and EL Education staff sent us letters and videos of support,” said Bill Haithcock, Principal of Harborside Academy, an EL Education Credentialed School in Kenosha. “School leaders from Minneapolis, who had faced a similar tragedy in their community, shared resources to help us tend to the well-being of students. In a moment when I felt lost as a leader, the EL Education network was my lifeline.”

**“In a moment when I felt lost as a leader,
the EL Education network was my lifeline.”**

Bill Haithcock, Principal, Harborside Academy

“This moment of tragedy could have divided our school community,” said Rhonda Lopez, Principal of Wilson Elementary School in Kenosha. “With the support of our network, we were able to lean into restorative practices and bring healing to our community.”

When a similar tragedy shook Waukegan, Illinois just a few months later, the schools in Kenosha were able to “pay forward” the support that was given to them by sharing emotional care, experiences, and resources with the EL Education schools there.

In a difficult year for schools and communities across the country, the EL Education network meant more than ever.

Building Students' Character: Does It Work?

In 2019, with the support of the John Templeton Foundation and Einhorn Collaborative, education researchers Sara Rimm-Kaufman and Celine Thompson from the University of Virginia and Lia Sandilos from Temple University partnered with EL Education on the Excellence in Character Education (ExCEL) study to address two questions:

1. Do students in EL Education schools develop stronger ethical character?
2. If so, what is happening differently in EL Education schools to create these outcomes?

After one year studying a group of EL Education middle schools and matched comparison schools, the researchers found:

EL Education students have a greater sense of belonging

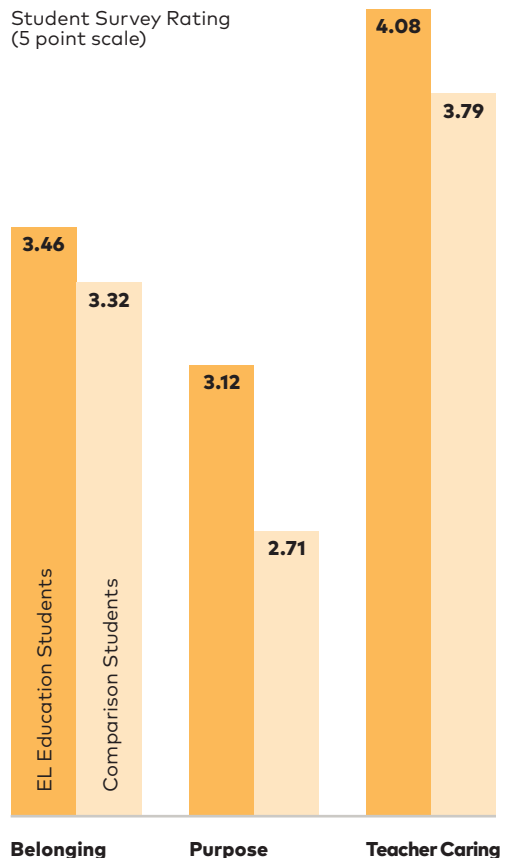
EL Education students have a greater sense of purpose

EL Education students are more likely to say that their teachers care about them

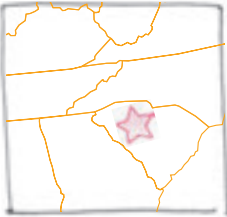
Next year, the researchers will examine whether these strengths lead to development of ethical character in students, and if so, which EL Education practices help to promote these strengths.

Development of Character in EL Education Students

Student Survey Rating (5 point scale)



Using Data to Support Students



Meadow Glen Middle School
Lexington, SC

In the spring of 2020, the leaders at Meadow Glen Middle School (MGMS), an EL Education Credentialed School in Lexington, South Carolina, were given 72 hours to come up with a plan for virtual learning. To meet the moment, they leaned into the [EL Education Dimensions Data Platform](#), where they could track implementation and outcomes. “Using Dimensions, we were able to survey our kids really quickly. We were the first school in our district to identify students who didn’t have access to the internet,” said Dr. Bill Coon, founding Principal of MGMS and 2016 NASSP State Principal of the Year.

As virtual learning turned from days to weeks to months, Coon and his team used the student survey and classroom observation tools available through the platform to gather the information that test scores couldn’t show. “Using Dimensions allowed us to focus on the human side of our students. The feedback we got from them let us know that they needed more support to feel heard, particularly our students of color.”



Elgin Math and Science Academy Charter School
Elgin, IL

Eight hundred miles north in Elgin, Illinois, Lezlie Fuhr, founding Principal and CEO of Elgin Math and Science Academy Charter School (EMSA), an EL Education school, was using Dimensions to send weekly surveys to students and their families to pinpoint their exact needs, whether it was access to food, technology, or one-on-one teacher support.

“Collecting data gives us the opportunity to level the playing field. We can quickly understand the needs of our students and families and respond with the right support,” said Fuhr.

“Collecting data gives us the opportunity to level the playing field.”

Lezlie Fuhr, Principal and CEO, Elgin Math and Science Academy Charter School

As the school toggled between in-person, hybrid, and virtual learning, the measurement tools in Dimensions provided a pathway to identify trends and respond to them. “We saw trends indicating students didn’t feel like they could share their ideas. We gave students the opportunity to play a part in making our school community what they want it to be.”

In a time when clarity is fleeting, data provided consistency and a clear path forward to meet the needs of all students.

"School isn't all about the learning. It is also about advocacy, respect, intellect and curiosity, stewardship, along with social and psychological connection. This is what I think matters in schools: connection."



Sarah

EL Education 2020 Virtual Summit Speaker
8th Grade Student, Metropolitan Expeditionary Learning School (MELS), a NYC Outward Bound School
Forest Hills, NY

[↪ Watch Here](#)

Fostering Connections that Matter



Metropolitan Expeditionary Learning School (MELS)

Forest Hills, NY
Grades 6-12
840 Students

“What matters most for students is joy,” says Kim Scher, 6th grade social studies teacher at Metropolitan Expeditionary Learning School (MELS), a NYC Outward Bound School in Forest Hills, NY. “In Crew, kids can feel safe and connect to other kids joyfully. It creates a space where they can process what’s happening in the world around them—the pandemic, the presidential election, or just feeling lonely a lot of the time.” For many students across the EL Education network, regular **Crew meetings**, where small groups of students “circle up” with their adult Crew leader, have provided the glue to hold students together through the challenges of 2020.

When schools pivoted to virtual instruction, many schools that partner with EL Education, including MELS, reinvented **Crew in virtual classrooms**. “Even before the pandemic, Crew was the lifeblood of our school, the foundation of our enduring success,” says MELS Co-Principal Patrick Finley. “When the pandemic hit, it was like building a new school all over again, so we began with the piece that is most vital: Crew.” Students’ trust in their Crew family has proven to be a compelling reason to show up. MELS maintained a 92 percent attendance rate in 2020. Students’ attendance is an indicator of the meaningful curriculum and engaging instruction MELS is known for, resulting in a 97 percent graduation rate and a 98 percent college acceptance rate.

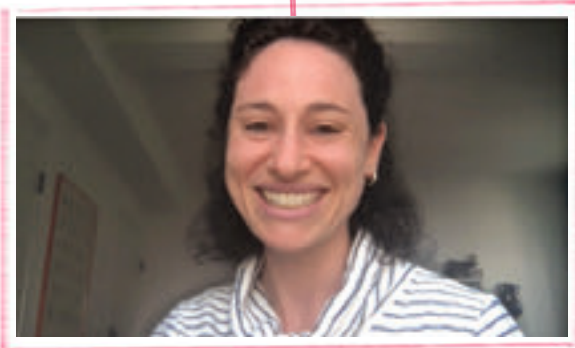
Scher's 6th grade Crew members agree that Crew has provided crucial support for both mental health and academic success during the pandemic.

"I think that coming to Crew has really helped me through remote learning because sometimes we might get overwhelmed with the situation we are going through and we can always open up about it in Crew. It's a safe space where not only the teacher listens to your experiences but where the Crew members also listen," says one sixth grader.

"Crew is the glue," says Co-Principal Damon McCord. "It's not so much a place but a group of people who belong to each other and a consistent structure that supports students to develop a positive identity, agency, and purpose."

Many Crew members have coped by helping others. Students in MELS teacher Lauren Kosasa's Crew, for example, worked on service projects that included finding safe shelter for the homeless, advocating for a rent freeze for local families in danger of eviction, and working for safe conditions and the release of incarcerated members of their community.

Key to helping students to speak up and take care of others is to stoke their sense of belonging and group identity, says Scher. "These kids are 12 and stuck at home," she says, "so their questions are often silly and surprising. One student asked other members of the Crew, 'How do you start eating your cereal? Do you pour the milk first or the cereal?'" Ever since, in the spirit of fun and



Scher's Crew checks in virtually

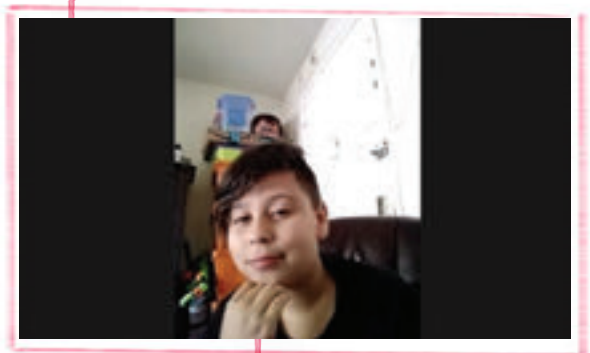
"Even before the pandemic, Crew was the lifeblood of our school, the foundation of our enduring success."

Patrick Finley, Co-Principal, MELS



creativity, students have shared all kinds of cereal variations. “It’s become an inside joke for our Crew that has spun into myriad proposals for a Crew name, based, of course, on cereal.”

The silly moments and the profound moments of empathy and service create a foundation for deeper sharing and support. In Scher’s Crew, the cereal antics recently made space for one student to bravely share news of a family tragedy, and for his Crewmates to affirm and support him. “The culture of my Crew is growing in a way that students can give more and more of themselves,” Scher says, “which means students are also fortified to be compassionate to others and resilient in the face of personal, local, and global challenges. That’s how we get through hard things together.”



Photos courtesy of MELS

"Teachers, encourage your Black students and others of color to join your classes. Do that not to bring the diversity you wish you had in your class, but because you are willing to embrace versatility within the four walls of your classroom. Do it because you know and understand that race gaps within your classes play a role in America's systematic racism. And, to my Black peers: Do not let invalidation be the reason why you are not aiming high, you are and can be just as great as everyone else."

Margarida

EL Education 2020 Virtual Summit Student Host
12th Grade Student, Casco Bay High School
Portland, ME

[➔ Watch Here](#)

Meeting the Moment

1 million

1,200

EL Education Flex Curriculum Launches

1 million views of the EL Education Flex Curriculum. In a matter of weeks, EL Education created the Flex Curriculum, which incorporated strategic digital resources and **skills videos** that ensured continued learning for all students whether at home or in school. In total, the EL Education website had 6.6 million visits in 2020.

Educators Unite for First Ever Virtual Summit

1,200 educators, researchers, experts, and students gathered virtually for *What Matters Most: Moving Toward More Equitable Schools*, joining forces to explore education equity during an unprecedented school year. Sponsors included LearnZillion and Open Up Resources, EL Education's curriculum distribution partners.

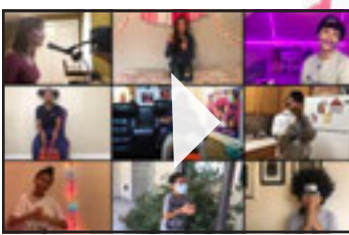
"EL Education is no doubt in the business of improving education. We are so impressed with the level of service to our district."

Dr. Yvette Stewart, Director of Elementary Teaching and Learning, Hamilton County Schools



Districts Across the Country Adopt the EL Education Language Arts Curriculum

4,300 educators from five districts attended virtual professional development during the summer of 2020 to learn how to effectively implement the EL Education K-8 Language Arts Curriculum. Grounded in joy, rigor, and participant engagement, **97 percent** of participants rated the quality of the training as good or excellent.



Students Making the World Better

93,000 views of the "Make the World Better" music video.

In addition to thousands of students supporting essential workers across the country, **34 students from 11 schools in seven states** composed, rehearsed, and performed the music video while in physical isolation as a part of Better World Day 2020 to bring joy, give gratitude, and offer comfort during a time of crisis.

91%

EL Education Provides Powerful Partnership

91 percent of EL Education partners were highly satisfied or satisfied with their school or district's partnership with EL Education; **89 percent** of EL Education partners strongly agreed or agreed that EL Education provides resources that support them in meeting their goals and achieving high levels of implementation.



We Are Crew Debuts

38 videos and a suite of related free resources accompanied EL Education's newest book, *We Are Crew: A Teamwork Approach to School Culture*. Co-authored by Ron Berger, Anne Vilen, and Libby Woodfin, *We Are Crew* provides the framework for building a school culture that fosters positive identity, belonging, agency, and purpose.

"A must-read for educators interested in the whole child, and in all children, and in the potential for schools to change lives."

Angela Duckworth, Founder and CEO, Character Lab

13,000

Reopening Guidance Centers on Equity, Excellence, and Social-Emotional Learning

13,000 educators accessed EL Education's Reopening Guidance to transform systems, centering the experiences of students and staff. These comprehensive, actionable recommendations and measures helped schools drill down to what matters most: equity, excellence, and emotional well-being, during crisis and beyond.

EL Education Credentialed Schools Transforming Educational Experiences

The hallmark of EL Education’s approach to reinventing school is an expanded definition of student achievement with three dimensions: student character, high-quality work, and mastery of knowledge and skills. The EL Education Credential represents a multi-year journey, demonstrating that joy and rigor can combine to engage youth in “getting smart to do good.”

In 2020, two schools received the EL Education Credential:

- **River Bluff High School**, a Lexington County school in South Carolina implementing the EL Education model since 2013.
- **Expeditionary Learning Middle School**, a Syracuse City school in New York implementing the EL Education model since 2008.

Forty-two schools across the country have attained the EL Education Credential. These schools provide a unique and transformative educational experience for their students.

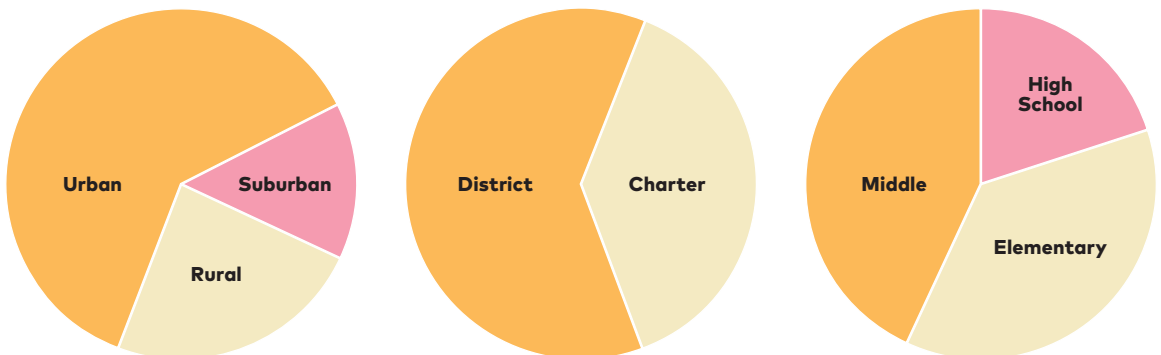
94%

High School Graduation Rate

94%

College Acceptance Rate

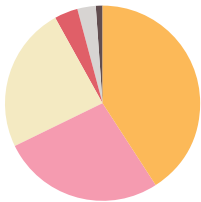
A Diverse Portfolio of Schools



Partnerships with Schools and Districts

EL Education partners with innovative public schools and districts to transform teaching and learning and improve student outcomes across an expanded view of student success. Our partners pair our resources and practices with our expert professional development to achieve the greatest results for students and teachers.

A Diverse Student Population



440,000+ Students	
White	41%
Latinx	27%
Black	24%
Multi-Racial	4%
Asian/ Pacific Islander	3%
Native American	1%

Students of Color



English Language Learners



Free or Reduced Lunch



Special Education



Districts and Networks of Schools

EL Education partners with districts, charter management organizations, and nonprofit school networks in diverse communities. This list includes multi-year partnerships active in 2020.

Arizona

Sunnyside Unified School District

California

Aspire Public Schools
Mount Pleasant Elementary School District
Oakland Unified School District

Colorado

Englewood Schools
Garfield County School District 16
Jefferson County Schools
Roaring Fork Schools

Connecticut

Windsor Locks Public Schools

Georgia

City Schools of Decatur
Pike County Schools

Illinois

Academy for Urban School Leadership
Dolton Riverdale School District 148
Rock Island-Milan School District 41
Silvis School District #34
Waukegan Public School District #60

Indiana

Michigan City Area Schools

Iowa

Des Moines Public Schools

Kentucky

Jefferson County Public Schools

Michigan

Detroit Public Schools Community District

New York

East Ramapo Central School District
Kenmore-Town of Tonawanda Union Free School District
NYC Outward Bound Schools
Pine Bush Central School District
Silver Creek CSD
Westhill Central Schools

North Carolina

Charlotte-Mecklenburg Schools
Wake County Public School System

Ohio

Cleveland Metropolitan School District
Lancaster Public Schools

Pennsylvania

Propel Charter School Network

Rhode Island

North Providence School Department
Westerly Public Schools

Tennessee

Hamilton County Schools

Virginia

Richmond City Public Schools

Wisconsin

Eleva-Strum School District



Schools

EL Education partners with public schools, charter and district, to implement a powerful design for learning that transforms teaching, learning, and school culture. This list includes multi-year partnerships active in 2020. EL Education Credentialed Schools are highlighted in bold text.

California

Big Pine Unified School District
Big Pine

Conway Elementary
Escondido

Grass Valley Charter School
Grass Valley

Lighthouse Community Charter School
Oakland

Lodestar Community Charter
Oakland

Manor Elementary
Fairfax

Melrose Leadership Academy
Oakland

Orange County Educational Arts Academy
Santa Ana

Rosemary Elementary
Campbell

Sierra Academy of Expeditionary Learning
Nevada City

Sierra Expeditionary Learning School
Truckee

Vallejo Charter School
Vallejo

Ventura Charter School of Arts and Global Education
Ventura

Colorado

Adventure Elementary
Denver

Annunciation Catholic School
Denver

Basalt Middle School
Basalt

Carbondale Middle School
Carbondale

Centennial Elementary School
Denver

Columbine Elementary School
Denver

Crystal River Elementary School
Carbondale

Downtown Denver Expeditionary Learning School
Denver

Dutch Creek Elementary School
Littleton

Escalante Middle School
Durango

Explore Elementary
Thornton

Fox Creek Elementary School
Highlands Ranch

Glenwood Springs Elementary School
Glenwood Springs

Glenwood Springs Middle School
Glenwood Springs

Green Gables Elementary School
Lakewood

Joe Shoemaker Elementary School
Denver

Lake County Intermediate 3-6
Leadville

Lumberg Elementary School
Edgewater

Mapleton Expeditionary School of the Arts
Thornton

North Routt Community Charter School
Clark

Park Elementary School
Durango

Pennington Elementary School
Wheat Ridge

Pikes Peak School of Expeditionary Learning (PPSEL)
Falcon

Pine Lane Elementary School
Parker

Silverton School of Expeditionary Learning
Silverton

Sopris Elementary School
Glenwood Springs

St. Rose of Lima
Denver

Stevens Elementary School
Wheat Ridge

Summit View Elementary
Highlands Ranch

The Odyssey School of Denver
Denver

Tollgate Elementary
Aurora

Trailside Academy
Denver

Villa Bella Expeditionary School
Pueblo

Welby Community School
Denver

Wellspring Catholic Academy of St. Bernadette
Lakewood

West Jefferson Elementary School
Conifer

West Park Elementary School
Leadville

William Smith High School
Aurora

Connecticut

Expeditionary Learning Academy at Moylan
Hartford

Illing Middle School
Manchester

Sanchez Elementary School
Hartford

South Elementary School
Windsor Locks

Delaware

Kuumba Academy Charter School
Wilmington

Georgia

Amana Academy
Alpharetta

Amana West Academy
Alpharetta

Brighten Academy Charter School
Douglasville

Centennial Academy
Atlanta

Clairemont Elementary School
Decatur

Glennwood Elementary School
Decatur

Harriet Tubman School of Science and Technology
Atlanta

Michael R. Hollis Innovation Academy
Atlanta

Oakhurst Elementary School
Decatur

Talley Street Upper Elementary
Decatur

Westchester Elementary School
Decatur

Winnona Park Elementary School
Decatur

Idaho

Anser Charter School
Garden City

Palouse Prairie Charter School
Moscow

Sunnyside Elementary
Idaho Falls

Illinois

Dvorak Elementary School (AUSL)
Chicago

Elgin Math and Science Academy
Elgin
Kozminski Elementary Community Academy
Chicago

Marcus Garvey Elementary School
Chicago
Marquette School of Excellence
Chicago

McNair School of Excellence
Chicago

Polaris Charter Academy
Chicago

Thomasboro Grade School
Thomasboro

Indiana

Global Prep Academy
Indianapolis
The Path School
Indianapolis
York Elementary
Bristol

Iowa

Harding Middle School
Des Moines
Monroe Elementary School
Des Moines

Maine

Casco Bay High School
Portland

Harpswell Coastal Academy
Harpswell

King Middle School
Portland

Presumpscot Elementary School
Portland

St. George School
Tenants Harbor

West Bath School
West Bath

Maryland

Lillie May Carroll Jackson Charter School
Baltimore
Monarch Academy
Glen Burnie Campus
Glen Burnie

Massachusetts

Alma Del Mar - Frederick Douglass Campus
New Bedford

Alma Del Mar - Sarah D Ottiwell Campus
New Bedford

Baystate Academy Charter Public School
Springfield

Christa McAuliffe Charter School
Framingham

Codman Academy Charter Public School
Dorchester

Conservatory Lab Charter School
Dorchester

Four Rivers Charter Public School
Greenfield

Graham and Parks Alternative School
Cambridge

Holmes Innovation School
Dorchester

M. Marcus Kiley Middle School
Springfield

Mohawk Trail Regional High School
Shelburne Falls

Old Sturbridge Academy Public Charter School
Sturbridge

Prospect Hill Academy Charter School
Cambridge

The Springfield Renaissance School
Springfield

Michigan

Baldwin Elementary School
Baldwin

Detroit Academy of Arts and Sciences
Detroit

Detroit Achievement Academy
Detroit

Detroit Prep
Detroit

Eagle's Nest Academy
Flint

Ellen Thompson Elementary
Detroit

Flint Cultural Center Academy
Flint

Francis Street Primary
Jackson

Henry Ford Academy
Detroit

Mark Murray Elementary
Detroit

Miller Elementary School
Detroit

UPA High School
Detroit

UPA Middle School
Detroit

Minnesota

Open World Learning School
Saint Paul

Schoolcraft Learning Community
Bemidji

New Jersey

Environment Community Opportunity Charter School
Camden

New York

Brighton Academy
Syracuse

Brooklyn Collaborative Studies
Brooklyn

Channel View School for Research
Rockaway Beach

Charter School for Applied Technologies
Buffalo

Community School for Social Justice
The Bronx

Discovery Charter School
Rochester

Dr. Walter Cooper Academy
Rochester

East High School
Rochester

Eugenio Maria de Hostos Charter School
Rochester

Expeditionary Learning Middle School
Syracuse

Gaynor McCown School
Staten Island

Genesee Community Charter School
Rochester

Hyde Leadership Charter School
Brooklyn

I.S. 206 Ann Cross Mersereau
The Bronx

J. Keld/Briarwood School
Queens

James Baldwin School
New York City

Kurt Hahn School
Brooklyn

Launch Charter School
Brooklyn

Leaders High School
Brooklyn

Manhattan Charter School I
New York

Manhattan Charter School II
New York

Marsh Avenue Expeditionary Learning School (MAELS)
Staten Island

Metropolitan Expeditionary Learning School (MELS)
Forest Hills

MS 390
The Bronx

MS839
Brooklyn

Niagara Charter School
Niagara Falls

NYC Academy for Discovery
Queens

P.S. 112 Bronxwood
The Bronx

PS 045 Clarence Witherspoon
Jamaica

PS 063 Author's Academy
The Bronx

PS 214
The Bronx

PS 223 Lyndon B. Johnson
Queens

PS/IS 30 Mary White Ovington
Brooklyn

PS/MS 280
The Bronx

Ripley Central School
Ripley
Roberto Clemente
School No. 8
Rochester

Tapestry Charter
School (K-12)
Buffalo

West Buffalo Charter
School
Buffalo

West End Secondary
School
New York

Washington Heights
Expeditionary
Learning School
(WHEELS)
New York

World of Inquiry
School No. 58
Rochester

North Carolina

**Evergreen
Community Charter
School**
Asheville

Franklin School of
Innovation
Asheville

Ohio

Citizens Leadership
Academy
Cleveland

Citizens Leadership
Academy East
Cleveland

Citizens Leadership
Academy Southeast
Cleveland

Clifton Area
Neighborhood School
Cincinnati

College Hill
Fundamental
Academy
Cincinnati

Graham Elementary
and Middle School
Columbus

Mt. Washington
School
Cincinnati

Rees E. Price
Academy
Cincinnati

The Charles School
Columbus

The Graham School
Columbus

Oregon

Beaverton Academy of
Science and Engineering
Beaverton

City View Charter School
Hillsboro

Columbia City
Elementary
Columbia City

Realms High School
Bend

Realms Middle School
Bend

Pennsylvania

Collegium Charter School
Exton

Environmental Charter
School
Pittsburgh

Lincoln PreK-5
Pittsburgh

Montour Middle School -
Propel
McKees Rocks

Propel East K-8
Turtle Creek

Russell Byers Charter
School
Philadelphia

Rhode Island

The Greene School
West Greenwich

South Carolina

Gilbert High School
Gilbert

Gilbert Middle School
Gilbert

Lead Academy
Greenville

Meadow Glen Elementary
School
Lexington

**Meadow Glen Middle
School**
Lexington

River Bluff High School
Lexington

Tennessee

Calvin Donaldson
Elementary
Chattanooga

Clifton Hills Elementary
School
Chattanooga

Hardy Elementary School
Chattanooga

Harrison Elementary
School
Chattanooga

Orchard Knob
Elementary School
Chattanooga

Woodmore Elementary
School
Chattanooga

Utah

Entheos Academy -
Kearns Campus
Kearns

Entheos Academy -
Magna Campus
Kearns

GreenWood Charter
School
Harrisville

Pacific Heritage Academy
Salt Lake City

Voyage Academy
Clinton

Virginia

**Campbell
Elementary School**
Arlington

Washington, DC

**Capital City Public
Charter School**

Capital Village Schools

I Dream Academy

Mundo Verde Bilingual
Public Charter School

The Social Justice School

**Two Rivers Public
Charter School -
4th Street Campus**

Two Rivers Public Charter
School-Young Campus

West Virginia

Explorer Academy
Huntington

Grandview Elementary
School
Charleston

Wisconsin

**Arbor Vitae-Woodruff
Elementary School**
Arbor Vitae

Atwater Elementary
School
Shorewood

Frank Elementary
Kenosha

Harborside Academy
Kenosha

Jefferson Elementary
Kenosha

Lake Bluff Elementary
School
Shorewood

Marathon Area Primary
Marathon

**Marathon Venture
Academy**
Marathon

Milwaukee Environmental
Sciences Academy
West Allis

One City Elementary
School
Madison

St. Joseph Academy
Milwaukee

Vernon Elementary
Kenosha

Wilson Elementary School
Kenosha



"The things that matter the most are empowering students with the belief that they have the power to make a difference and making sure that students can see themselves in their learning and make meaningful connections to lessons."

Tawana Jordan

2020 Klingenstein Teacher Award Recipient
Teacher, Detroit Public Schools Community District
Detroit, MI

[➔ Watch Here](#)



Thank You to Our Supporters

Thank you to the many organizations and individuals who provide generous philanthropic support for our work. Our community of supporters shares our belief in the promise of public education as an engine for equity, justice, and opportunity for all children.

Lead Supporters — \$500,000 and up



The Lead Supporters list recognizes active grants in 2020.

Stewards

\$100,000 to \$499,999

The Buckley Foundation
 Ravenel B. Curry, III
 Detroit Children's Fund
 Marsha and James McCormick
 Harriet L. and Paul M. Weissman

\$25,000 to \$99,999

Anonymous
 The Burch Family
 The Estée Lauder Companies Charitable Foundation
 Fund for Teachers
 Patricia Klingenstein*
 Thomas Klingenstein*
 Andrew and Julie Klingenstein*

Sally Martell*
 Pritchard Foundation
 Melissa and R. Bruce Rich
 Carol and Irwin Silverberg**
 Nancy Simpkins*
 Walton Family Foundation
 Weil, Gotshal & Manges LLP
 Virginia H. and Geoffrey F. Worden

Stewards (continued)

\$10,000 to \$24,999

Jewelle and Nathaniel Bickford
Marjorie B. Buckley*
Mary and Brad Burnham
Alexandra and David Drucker
Hope and John Furth*
LearnZillion
Sara Moss and Michael Gould
Open Up Resources
Kathryn H. Penske
Corinne and Ronald Rieder
Tracey and Phillip Riese
The Muriel F. Siebert Foundation
Lynn G. Straus
Stuart Foundation*
Susan Jo Wilen and Peter Segal
Jo and Peter Ziesing

\$1,000 to \$9,999

Anonymous
Frances C. Ashley
Michael I. Bernstein
Priscilla H. Blum*
Tina and Jeffrey Bolton
O'Herron Family Foundation*
Meg Campbell
Dr. Jolley Bruce Christman
Sharon and Jon Corzine
Mr. and Mrs. Walter P. Czarnecki
Rufus Dalton
Robert Doris and Mary Sauer
Michael A. Epstein
Gamba Family Foundation
Arlene and Charles Gibson
Jeffrey Gittleman
Victor J. Goldberg
and Patricia A. Waldeck
Allen and Jane Grossman
Hugh J. Helfenstein
Mrs. Gerry Hodes*
Daney and Lee Klingenstein
Mary Knobler
Mrs. Joann Lang
Joseph Levine and Jane Cyphers
William Lockwood, Jr.*
Linda Lorimer and Charles Ellis
William Loskota
Jamie and Meg McLane*
Robert S. Miller
Anita Nager and Wally Wentworth*
Paula Oppenheim*
Louis and Barbara Perlmutter
Mr. and Mrs. Carl Pforzheimer*
Raikes Foundation
Albert Sisto
Kaki and JP Smith

\$1,000 to \$9,999 (continued)

Robert Stone
Barbara Strauss
Arthur Sulzberger Jr.
Dhuanne and Douglas Tansill
Sanna Randolph Thomas
The V & L Marx Foundation*
Heather and Max von Zuben
Patricia and Lawrence Weinbach
Lynn and Charles Weiner
Virginia Welch
Amanda and Douglas Wurtz
Richard and Jane Zenker
Alfred and Patricia Zollar

Up to \$1,000

Anonymous
Mrs. Sherrie Akinsanya
Joyce Akridge
AmazonSmile Foundation
Kenneth Bartels and Jane Condon
Roland Barth
Pamela and Robert Beck*
Henry G. and Carolyn M. Brauer
Lili and Stanford Brown*
John and Mary Duncan Brust
Julie Morrisroe Bú
Gretchen Bukowick
Lindsay Casale*
Vendoria Cozart
Lauren Dale
Itai Dinour
Susan Wolf Ditkoff
Lucina Doren
Marion Dry
Angela Duckworth
Laura Dunn
Karen Eckhoff
David Ford*
Peter Garbus
Susan and John Gevertz*
Nancy Gladstone*
Jill Haske!*Margot Heller and Pamela Johnson*
Pamela and Sam Himmelrich*
Howard Horvath
The Kaminsky Family
Robyn Kloop
Erica Krieger
Adam C. Krusi-Thom
Sara H. Lavelle
Felicia Lee
Kate Liebhold*
Nisha Ligon
Jamee and John Lynch

Up to \$1,000 (continued)

Gordon and Blair MacInnes*
Scott Maddux
Joan A. Mark
Dirk Matthias
Jerilyn McAniff
Meghan and John McCormick**
Steven Melzer
Robin Mendelson
Mr. and Mrs. Thomas E. Moore III
Sandra G. Morrison*
Mr. and Mrs. Fortune Nava*
Helen Stambler Neuberger
and Jim Neuberger*
Amanda Neville and
Three Furies Consulting
Reena Patel
Mary Carr Patton and John Shaw*
Beth Gamba Steel
David and Gigi Priebe
Judy S. Reich*
Sophie O. Riese
Meg Riordan
Doris Rosen and Family*
Geoff Rosin
Jeanny Roth*
Mr. and Mrs. Charles Rubens*
Rwanda School Project*
Judy Sandler and Skip Klein*
Mr. and Mrs. Richard Sandler
David Schlakman
Suzanne Schwerin*
Diane and Tom Seessel*
Jacob Shapiro
Margaret and Lee Skold
Laura Slover
Yvette Spratling
Cameron Stanford
Brenda and Peter Swords
Linda Thibodeau
Kiono K. Thomas**
Jean Tisne
John and Kitty Webster
Barbara and Alan Weinschel
Dede and Billy Wigton
Safiyah Williams
Lisa Wing*
Blaikie and Robert Worth*
Frances Ziesing*

Pro Bono

Hall Capital Partners LLC
Weil, Gotshal & Manges LLP

* In memory of Greg Farrell, EL Education Founding President (1935-2020)

** In memory of Lee P. Klingenstein, EL Education Founding Chair (1927-2020)

The Stewards list recognizes contributions made Sept. 1, 2019, the start of our 2020 fiscal year, through Dec. 31, 2020.

Celebrating the Lives and Contributions of Greg Farrell and Lee Klingenstein

The EL Education community pays tribute to two founding luminaries, **Greg Farrell**, Founding President, and **Lee Klingenstein**, Founding Board Chair. Greg and Lee helped to guide and sustain EL Education over decades, seeding a vision of education that joins academic achievement and character development, and building a growing community of purpose-driven educators and supporters.

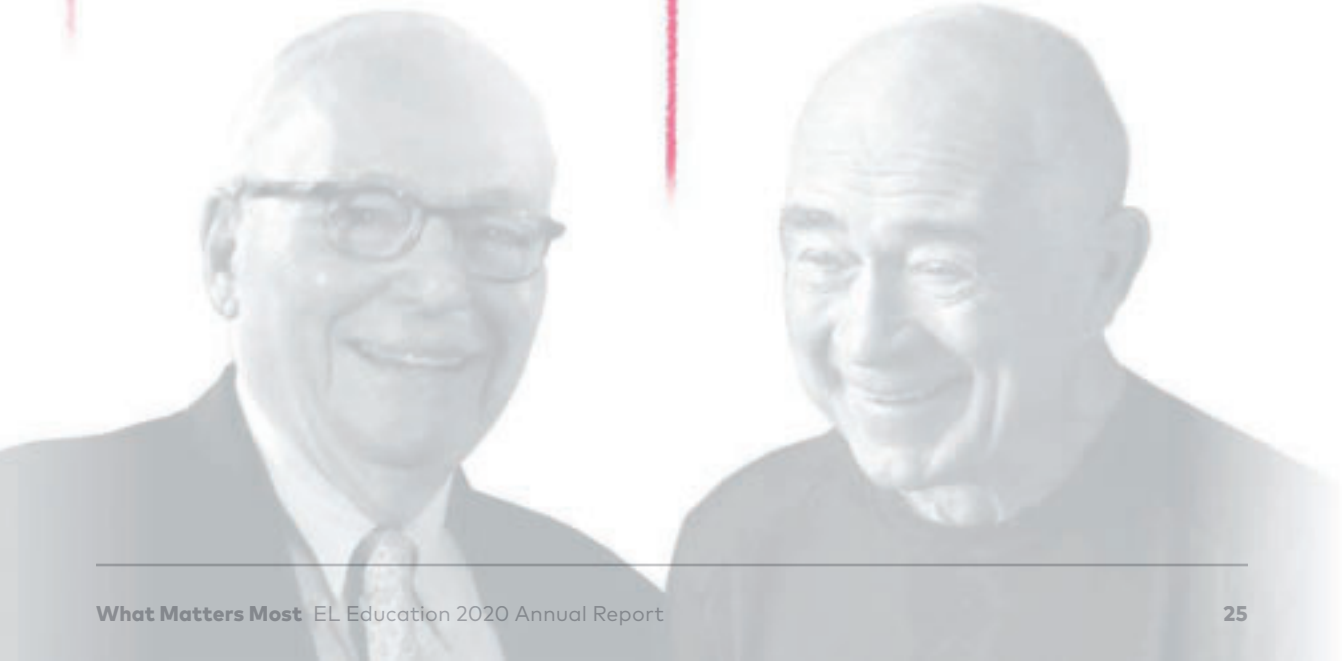
We are thankful for the vision, passion, and friendship of these two remarkable leaders, and we celebrate the lasting legacies of their inspiring lives of service.

"How many of us get the chance to involve ourselves deeply and perhaps even make a contribution to an organization that is capable of major change in a world?"

Lee Klingenstein (1927-2020)
Founding Board Chair, EL Education

"The idea is to put really important and difficult work together with great joy in doing it."

Greg Farrell (1935-2020)
Founding President, EL Education



Board of Directors

R. Bruce Rich
Chair

Scott Hartl
President & CEO

Tracey Riese
Vice Chair

Todd Gomez
Treasurer

Jewelle Bickford

Jean-Claude Brizard

Susan Wolf Ditkoff

David J. Drucker

Camille A. Farrington

Allen Grossman

Irwin Silverberg

Alexandra Buckley Voris

Harriet L. Weissman

Susan J. Wilen

Virginia Hill Worden
Chair Emerita

Jo Ziesing

Alfred Zollar

Research Advisors

Angela Duckworth
Rosa Lee and Egbert Chang Professor of Psychology, University of Pennsylvania
Founder and CEO, Character Lab

Camille A. Farrington
Managing Director and Senior Research Associate,
University of Chicago Consortium on School Research

Howard Gardner
John H. and Elisabeth A. Hobbs Research Professor of Cognition and Education,
Harvard Graduate School of Education

Robert J. Jagers
Vice President of Research, Collaborative for Academic, Social, and Emotional Learning (CASEL)

Jal Mehta
Professor of Education, Harvard Graduate School of Education

David Paunesku
Co-founder and Executive Director, PERTS, Stanford University

Sara Rimm-Kaufman
Professor, Curry School of Education, University of Virginia

Scott Seider
Associate Professor, Applied Developmental & Educational Psychology,
Lynch School of Education and Human Development, Boston College

Warren Simmons
Senior Policy Advisor, National Education Policy Center, School of Education,
University of Colorado, Boulder

Gregory Walton
Associate Professor of Psychology, Stanford University

Roger Weissberg
UIC Distinguished Emeritus Professor of Psychology, University of Illinois at Chicago
Chief Knowledge Officer, Collaborative for Academic, Social, and Emotional Learning (CASEL)

David Yeager
Associate Professor of Psychology, University of Texas at Austin

Institutional affiliations listed for purposes of identification

Statement of Activities

For the Year Ended August 31, 2020

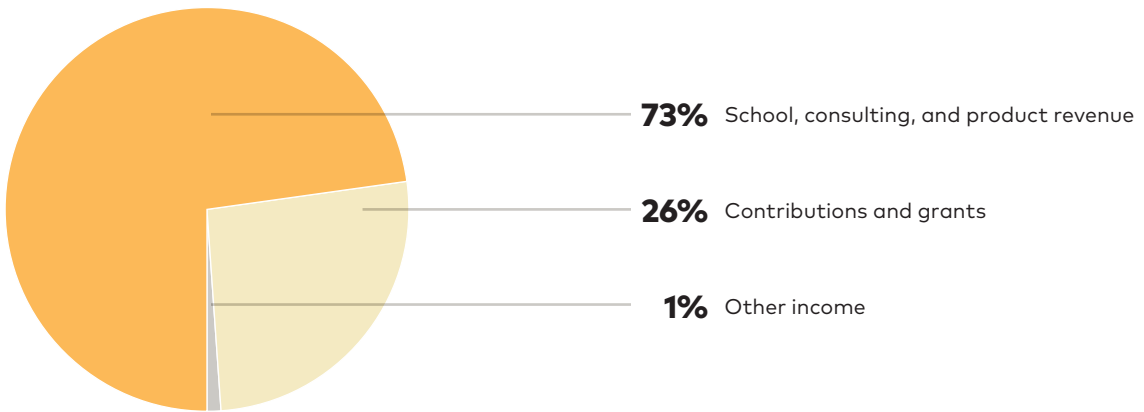
	Net Assets without Donor Restrictions	Net Assets with Donor Restrictions	Total
Revenue, support, and gains			
School, consulting, and product revenue	\$ 19,224,085	–	\$ 19,224,085
Contributions and grants	\$ 1,499,550	\$ 1,529,267	\$ 3,028,817
Net assets released from donor restrictions	\$ 5,373,114	\$ (5,373,114)	–
Other income	\$ 116,428	–	\$ 116,428
Investment income	\$ 240,813	–	\$ 240,813
Total revenue, support, and gains	\$ 26,453,990	\$ (3,843,847)	\$ 22,610,143
Expenses			
Program services	\$ 17,952,931	–	\$ 17,952,931
General management and administration	\$ 4,083,838	–	\$ 4,083,838
Fundraising	\$ 989,901	–	\$ 989,901
Total expenses	\$ 23,026,670	–	\$ 23,026,670
Change in net assets	\$ 3,427,320	\$ (3,843,847)	\$ (416,527)
Net assets, beginning of year	\$ 8,051,449	\$ 7,312,796	\$ 15,364,245
Net assets, end of year	\$ 11,478,769	\$ 3,468,949	\$ 14,947,718

All information from EL Education's independent audit report for the 2020 fiscal year ending August 31, 2020.

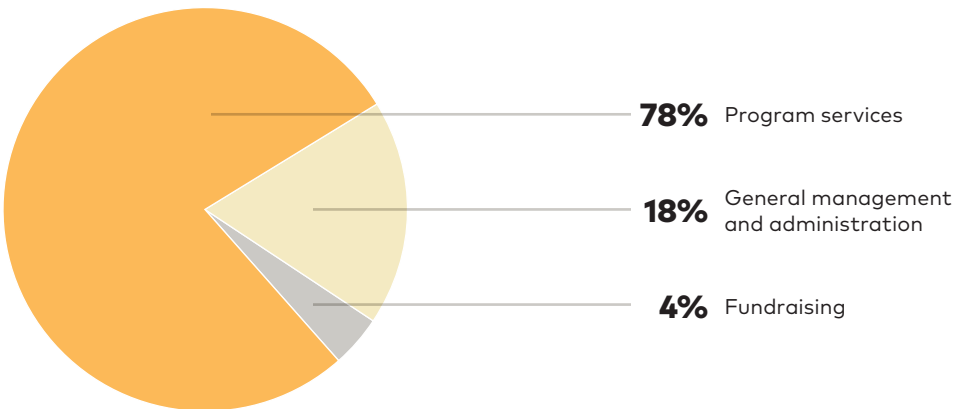
Financial Sustainability

EL Education’s strong financial position reflects capable financial management and oversight, diversified sources of revenue, and a healthy balance sheet. Our financial sustainability is critically important to our ability to deliver high-quality programs and services to public schools and districts across the country.

2020 Sources of Revenue



2020 Allocation of Expenses



In 2020, EL Education received a forgivable Paycheck Protection Program (PPP) loan as provided under the federal Coronavirus Aid, Relief, and Economic Security (CARES) Act.



"I love to learn and to help other people learn. Crew is important and we are not just classmates, we are a crew and a team. This is what matters most."

Amir

EL Education Student Ambassador
5th Grade Student, Two Rivers Public Charter School at 4th Street
Washington, DC

[➔ Watch Here](#)



Vision

When students and teachers are engaged in work that is challenging, adventurous, and meaningful, learning and achievement flourish.

Mission

To create classrooms where teachers can fulfill their highest aspirations, and students achieve more than they think possible, becoming active contributors to building a better world.

Approach

We enable educators to unleash the genius of every student in three dimensions of achievement: mastery of knowledge and skills, character, and high-quality work, through EL Education's professional development, K–8 Language Arts Curriculum, Core Practices, videos, books, and more.

Our approach reflects insights from the science of student success, which tells us that social, emotional, and academic development are deeply intertwined. We enable all students to thrive by partnering with schools to intentionally disrupt inequities at every level.

